



Human Touch / Value Creating / e-Logistics

The detail Introduction to business





Founded

January 1995



Licensed

**Freight Forwarder
N.V.O.C.C**



Licensed

IATA Agent
IAC/FAA



Licensed

US Customs Broker
(In-House: Andrew Park CHB-Binex wholly owned)



Licensed

Transportation Broker

(**TNA**-Trans North America-Binex wholly owned)



Certified

Member Since 2001



Risk Management: Professional Liability Insurance

US\$ 1 Million Per B/L

(Loss/Damage/E&O....)



Annual Turnover / Sales Revenue In 2024

About USD 220 Million



Employing:

About 250 People



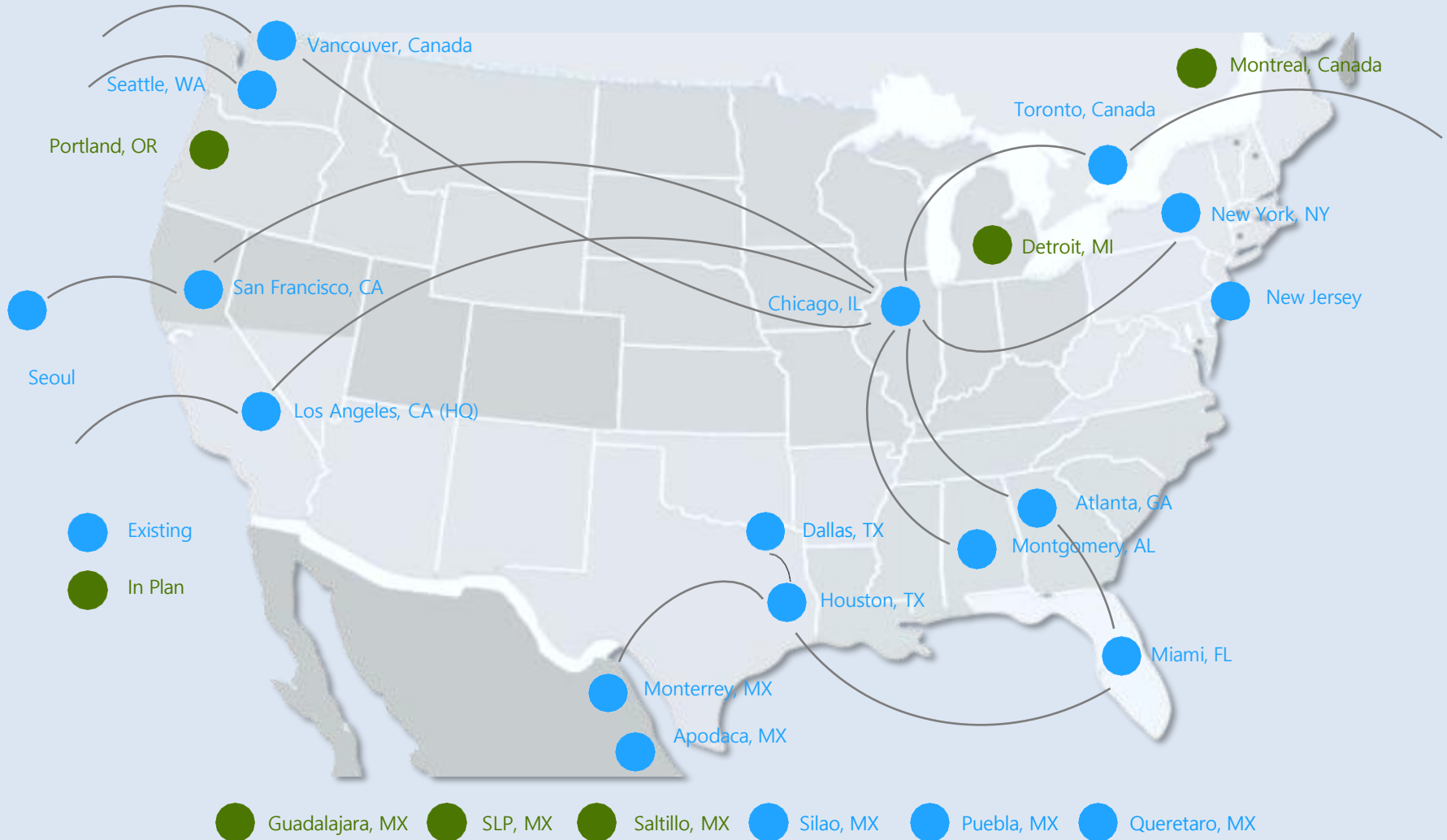
**USA(12): LA/SFO/SEA/CHI/NYC/NJ/ATL/
MGM/MIA/HOU/DFW/SFS**

Canada(2): Toronto/Vancouver

**Mexico(5): Monterey/Apodaca/Silao(Leon)/
Puebla/Queretaro**

Korea(1): Seoul

Nationwide Strategic Locations & Gateways



HQ Torrance Office & Distribution Center

- 55,000 sq ft warehouse
- ABC licensed
- HACCP Certified(Food Grade Warehouse)
- Available Reefer & Freezer storage



Torrance, CA (HQ)



SCS Global Services does hereby certify that an independent assessment has been conducted on behalf of:

Binex Line Corporation

19515 S. Vermont Avenue, Torrance, CA, 90502, United States
This company developed, maintains, and administers a

HACCP-based Good Distribution Practices (GDPs) Program

Product Scope: Soft Drinks and RTE Snacks

Audit Date: 01/21/2022 **Certificate Expiry Date:** 04/05/2023
Re-Audit Window: 12/21/2022 - 02/21/2023

The certification audit includes a program review and performance evaluation of the site's Food Safety Program. Audit of the program is based on 21 CFR Parts 117 Good Distribution Practices (cGDPs) and the operation's stated program requirements.

SCSglobal SERVICES

2000 Powell Street, Ste. 600, Emeryville, CA 94608 USA, (510) 452-8000

Jim Krutzger
Jim Krutzger
Vice President



Seattle Office & Distribution Center

Seattle, WA

- 38,000 sq ft warehouse
- Bonded CFS
- HACCP Certified(Food Grade Warehouse)
- Available Reefer storage



SCS Global Services does hereby certify that an independent assessment has been conducted on behalf of:

Binex Line Corporation

22718 Russell Road Kent, Washington 98032 USA
This company developed, maintains, and administers a

HACCP-based Good Distribution Practices (GDPs) Program

Product Scope: Ambient Dry Storage
Rating: Fair

Audit Date: September 27, 2022
Certificate Expiry Date: November 11, 2023
Facility ID #: 80005A36-1642028007

CERTIFIED
By SCS GLOBAL SERVICES

HACCP
FOOD SAFETY PROGRAM

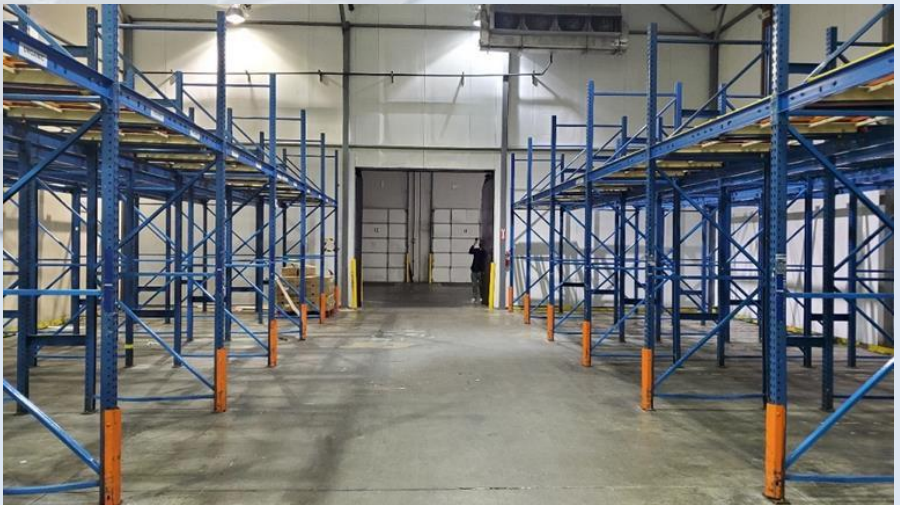
CERTIFIED
By SCS GLOBAL SERVICES

GOOD DISTRIBUTION PRACTICES
WICKHAM FOOD SAFETY PROGRAM

The certification audit includes a program review and performance evaluation of the site's Food Safety Program. Audit of the program is based on 21 CFR Parts 117 Good Distribution Practices (GDPs) and the operation's stated program requirements.

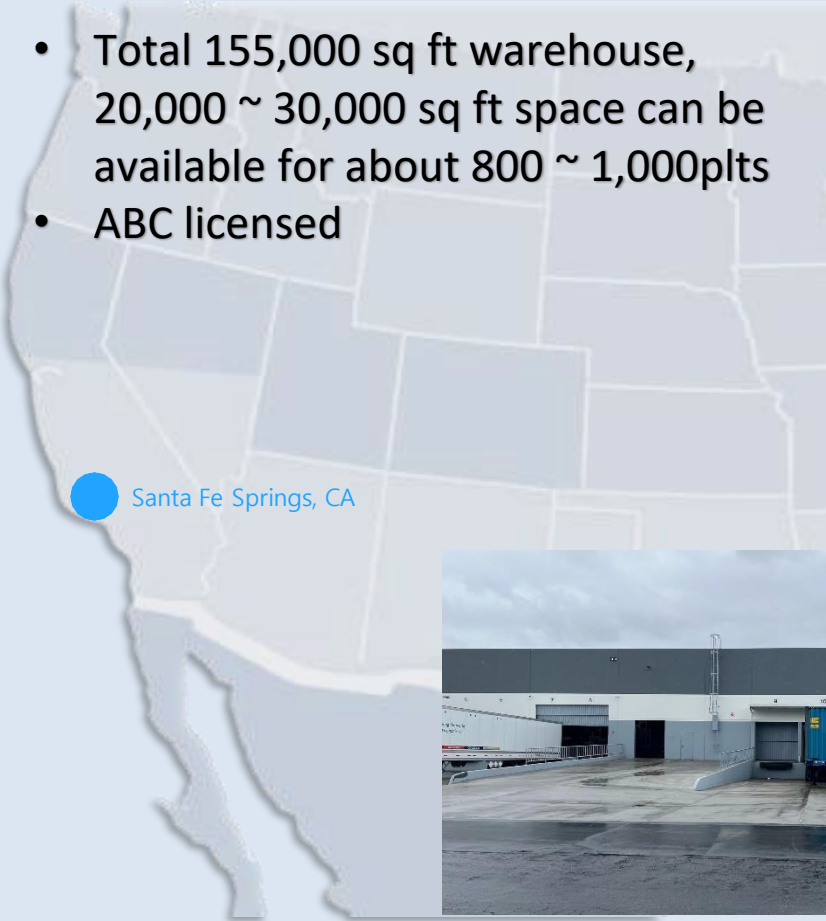
SCSglobal SERVICES

Jim Koutzon
Jim Koutzon
Vice President
2000 Powell Street, Ste. 600, Emeryville, CA 94608 USA, (510) 452-8000



Santa Fe Spring Fulfillments Center

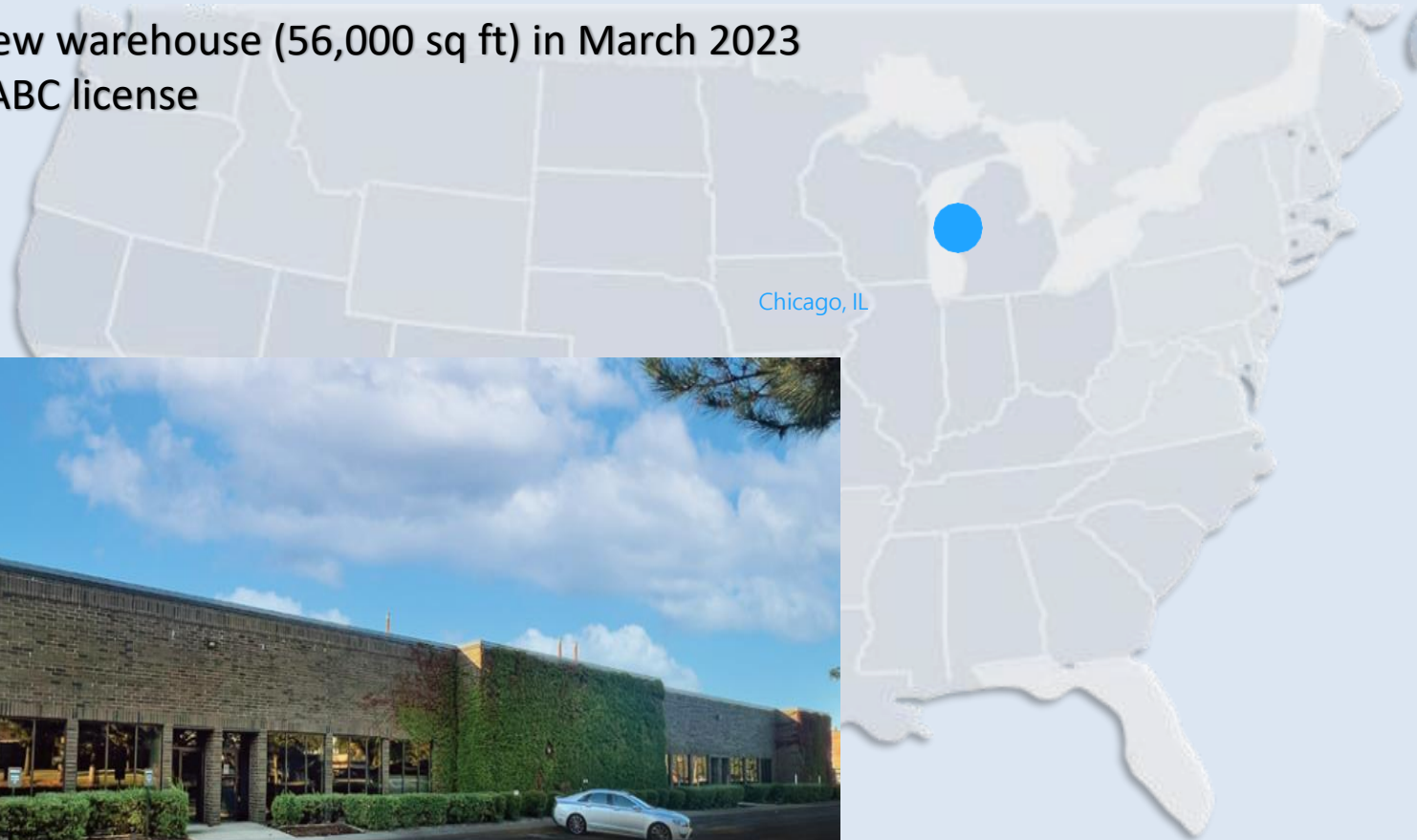
- Total 155,000 sq ft warehouse, 20,000 ~ 30,000 sq ft space can be available for about 800 ~ 1,000plts
- ABC licensed

 Santa Fe Springs, CA




Chicago Office & Warehouse


- Moving into new warehouse (56,000 sq ft) in March 2023
- In processing ABC license
- Bonded CFS



Canada Office & Warehouse

 Vancouver, BC Canada

- 125,000 sq ft warehouse
- Bonded CFS
- Auto Part Management
- KOTRA Logistics Partner

Toronto, ON Canada 



Mexico Office & Warehouse



Monterrey Logistics Center



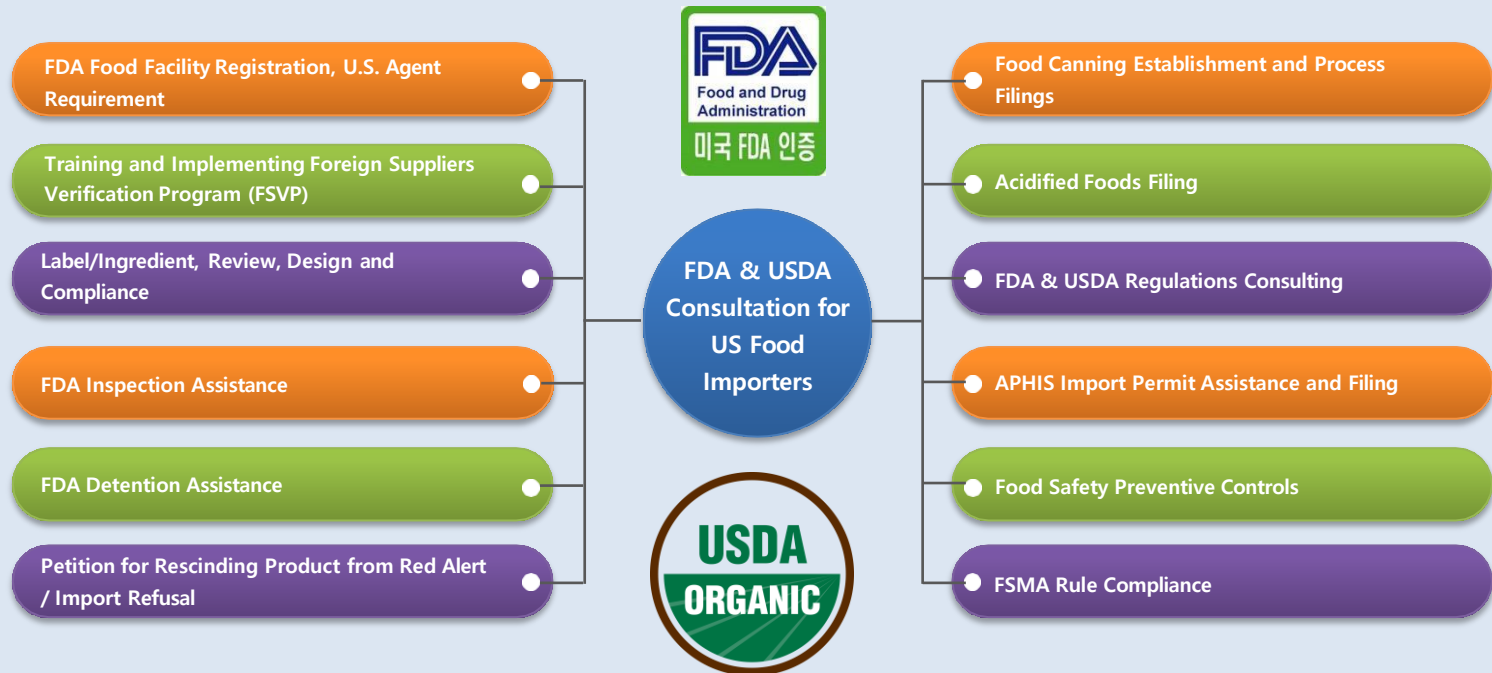
Silao Logistics Center



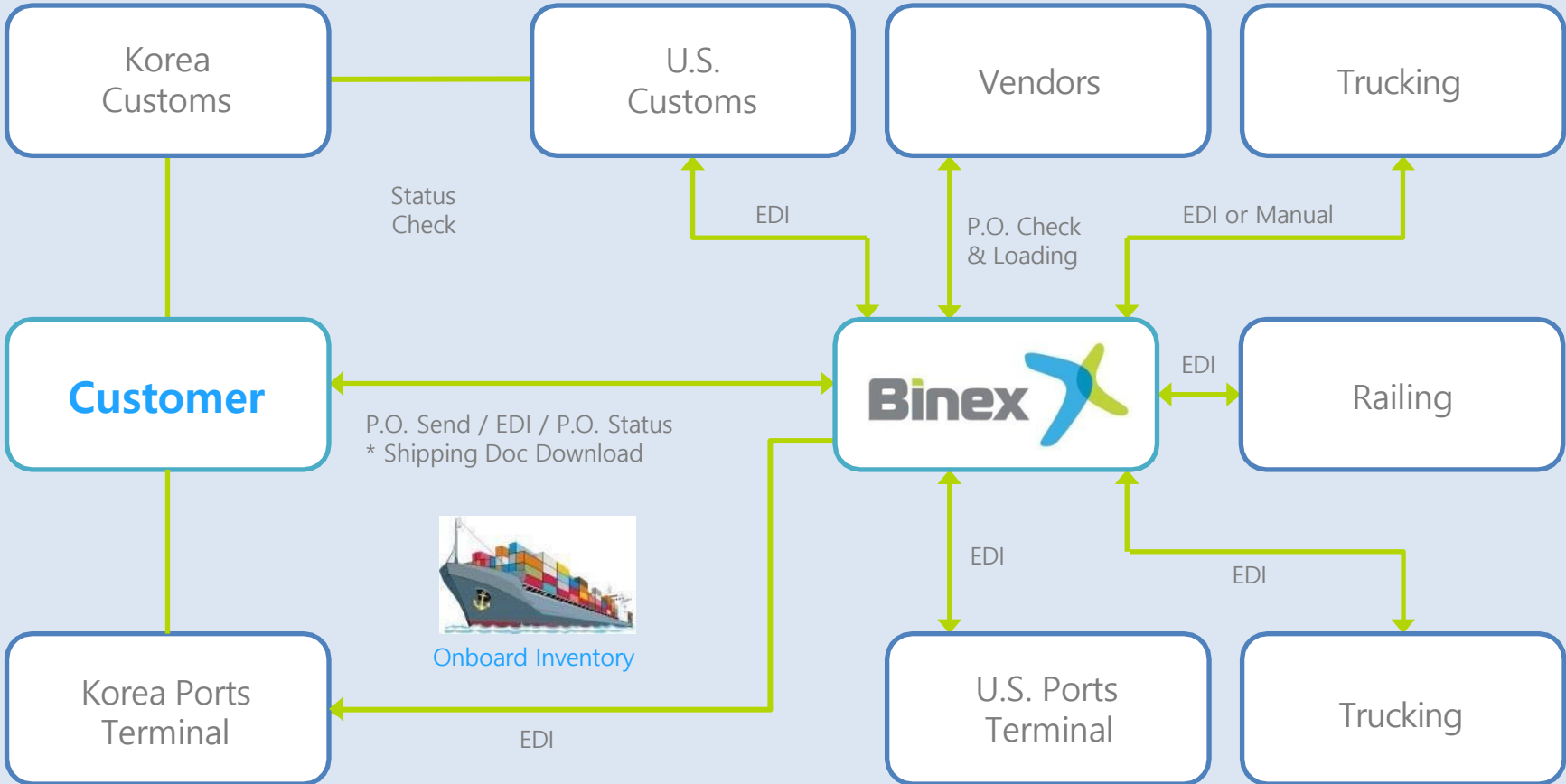
Puebla Logistics Center



Special Project: FDA & USDA Consultation For US Food Importers



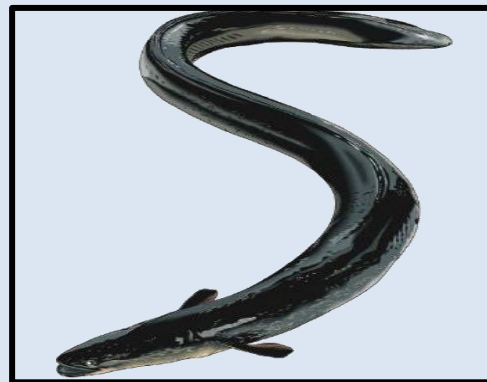
Informative P.O. Management: EDI System



Moving Fresh Produces



Moving Live Sea Foods



Special Project: Military Cargo



Boeing

F-15K Appointed Forwarder



DAPA

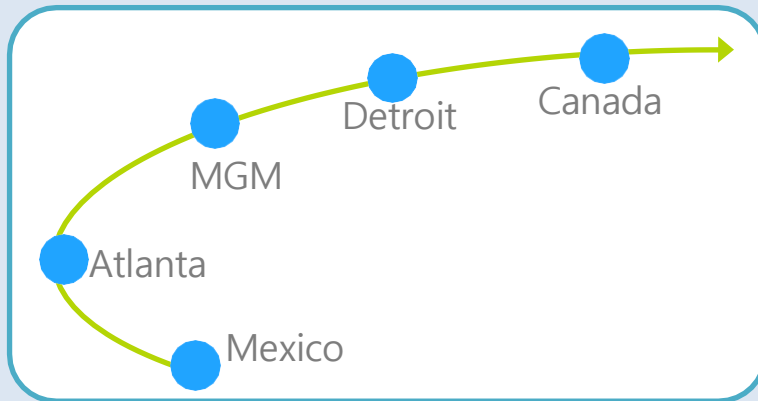
Korea Defense
Acquisition Program Ad
ministration



KAI

Korea Aerospace
Industries

Special Project: Auto Parts



HYUNDAI

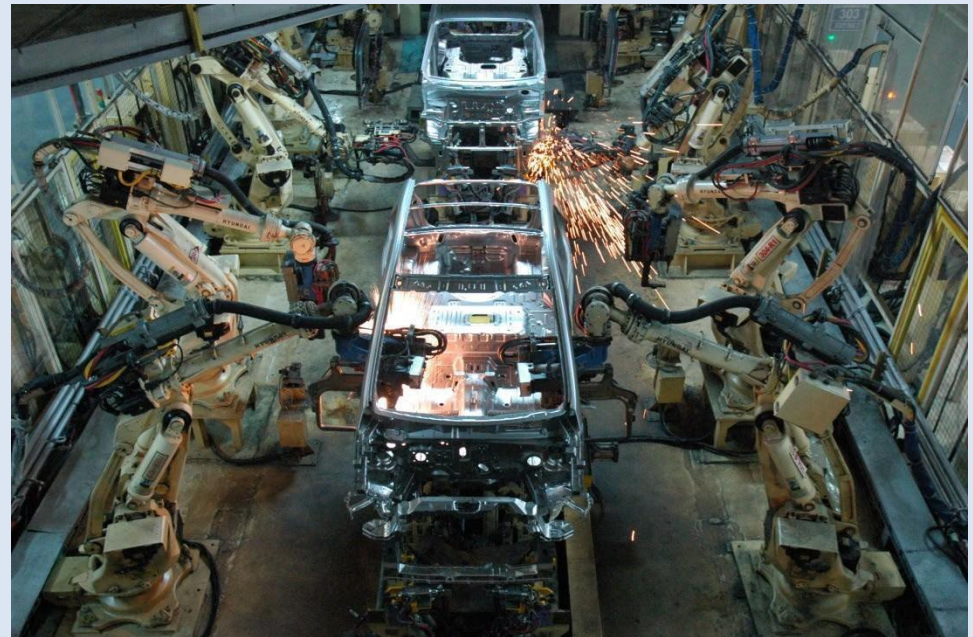
KIA

GM

Chrysler

- SeJong
- Mando
- Dea Heung
- Nifco

- Se Won
- Dae Dong
- HSS
- Magna



Major Global Logistics Partner



Major Customer



Our Contribution Back to the World

Binex proactively contributes to communities through corporate contributions, associate volunteerism, as well as various unique programs such as:

Children's Miracle Network Hospitals

Children's Miracle Network raises funds for North America's children's hospitals that are used to fund life saving care, education and research for our children.

Brittany's Hope Foundation

Brittany's Hope Foundation is a non-profit foundation dedicated to aiding and facilitating adoptions of special needs children from around the world. It raises funds and work with adoption agencies to lower the cost of adopting special needs children.

Han-Schneider International Children's Foundation

Through faith, love and compassion, the Han-Schneider International Children's Foundation is committed to breaking the cycle of poverty by creating a new cycle of prosperity. The mission of this Foundation is to provide life-saving essentials to the world's most destitute children.

Madison House Community, The Yakima Union Gospel Mission (YUGM)

The YUGM exists to provide Christ-centered rescue, recovery and restoration to men, women and children in need. Madison House is one of the programs offered by the Yakima UGM. It is available, at no cost, to all youth and adults who wish to participate in constructive activities; after-school and all day during the summer.

Hunter's Hope Foundation

Hunter's Hope Foundation is a non-profit organization committed to giving hope through education and awareness, research, and family care for Krabbe, Leukodystrophies, and Newborn Screening.

GCS(Grace Community Service)

The Foundation provides food and necessities everyday to people in need, and provides assistance and hope to people with cancer and disabilities.

MPAK(Mission to Promote Adoption of Kids)

MPAK is a non-profit organization that enables homeless children to grow up in loving homes through adoption.



Human Touch / Value Creating / e-Logistics

*thank
you*