

# *“ Trusted Logistics Partner Since 1995 ”*

---

*Human Touch / Value Creating / e-Logistics*



# Table of Contents

---

## 01 Introduction

Who We Are  
Message From Chairman  
Message From CEO  
Our Journey

## 02 Global Presence

Our Network Map  
The Central Command of Binex  
USA Coast-to-Coast Coverage  
Canada Expansion, Stronger Connections  
Mexico Rising Hub  
Korea Real-Time, First Connect

## 03 End-to-End

Global Ocean Freight  
Seamless Air Cargo  
Customs & Compliance Advisory  
North America Inland Freight Solutions  
Cross-Border Trucking Solutions

## 04 Differentiators

Fresh Cargo Expertise  
E-Commerce & Fulfillment Solutions I  
Fulfillment & E-Commerce Solutions II  
Visible & Digital Logistics  
Product-Specific Tailored Services

## 05 Beyond Logistics

Stories of Success  
Certified Excellence  
Social Responsibility

---



# Introduction

---

Who We Are

Message From Chairman

Message From CEO

Our Journey

---

# Who We Are

## Established in

---

January, 1995

## Headquarter in

---

Los Angeles, USA

## Sales

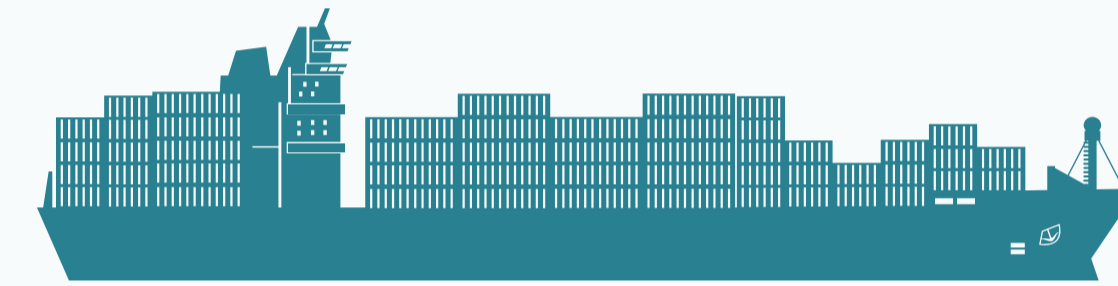
---

USD **250** million (as of 2025)

## Freight Volume

---

(as of 2025)



**98,300** TEU



**13,000** tons

## Employee

---

(as of 2025)



**254**

## Branch

---

(USA 13, Canda 2, Mexico 4, Korea 1)



Total **20**

## Message from **Chairman**

30 years ago, Tim Park and I founded Binex with a singular vision: to build a world-class international logistics company.

Since then, we have remained true to our founding principles while continuously pursuing change and innovation in response to the evolving demands of our industry. As a result, we have established a strong network across major cities in the United States, Canada, Mexico, and Korea, growing into a reliable organization.

Fifteen years ago, the acquisition of our headquarters became a key milestone, providing the foundation for corporate image enhancement and IT-driven growth initiatives. Today, we continue to strengthen our growth momentum through ongoing operational innovation.

To give back to the customers, colleagues, partners, and communities that have supported Binex, we introduced “Value Creation” as our Mission Statement and remain committed to becoming a company everyone associated with us can be proud of.

Under the leadership of CEO Tim Park, our continued organizational and operational innovations are helping us navigate economic uncertainties while preparing for future challenges.

Moving forward, Binex will continue to embrace change and strengthen our competitiveness through continuous innovation in a rapidly evolving economic environment, striving to meet the expectations of our customers, partners, employees, and society.

We sincerely thank everyone who has supported and trusted us throughout our journey and look forward to your continued partnership and support.



BINEX LINE CHAIRMAN  
David Paek



# Message from CEO



Since its founding in 1995, BINEX LINE has continued to grow steadily despite the rapid changes within the global logistics industry. This progress has been made possible by the continued trust of our valued customers, the strong support of our partners, and the dedication of our employees. We sincerely extend our deepest gratitude to all who have contributed to our journey.

Today, BINEX LINE has established a seamless logistics network across North America, enabling us to provide reliable and efficient services regardless of where our customers' cargo begins or ends its journey. Through this network, we strive to deliver meaningful value to our customers while growing together with their businesses.

Yet our journey does not stop here. In an ever-changing global logistics environment, we remain committed to continuous improvement and innovation in order to provide services that stay ahead of industry demands.

At the same time, BINEX LINE is investing in the next generation of leadership by creating opportunities for young professionals to grow and contribute to the future of our organization.

We also remain dedicated to our social responsibilities by supporting local communities and working toward the development of a sustainable logistics ecosystem.

Growing together with our customers while contributing to a better future—this is the mission that guides BINEX LINE.

Moving forward, BINEX LINE will continue to stay true to its founding values while serving as a trusted partner in opening new horizons in global logistics.

BINEX LINE CEO  
Timothy Park





# Our Journey

---

## 1995

Established Binex Line Corp. by David Paek and Tim Park

## 1996

Established New York/New Jersey Branch

## 1999

Established Chicago Branch

## 2000

Moved New York Branch to New Jersey

## 2004

Introduced Binex First Informative Software System

## 2006

Established Atlanta Branch

## 2007

Established Montgomery Branch

## 2008

Established In-House Custom Broker Services

## 2011

Established Toronto Branch  
Established Seattle Branch  
Established San Francisco Branch

## 2012

Established New York (JFK) Branch

## 2013

Binex Corp. HQ relocated to Torrance, CA

## 2014

Established Miami Branch

## 2015

Established Monterrey, Mexico Branch  
Established Houston Branch  
Established Seoul, Korea Branch

## 2016

Established TNA Freight. LLC

## 2017

Established Apodaca/Silao Sales Office  
Launched Bonded CFS Operation in Toronto, Canada

## 2018

Established Vancouver Branch  
Established TSA Certified Cargo Screening Facility with X-Ray Screening Capability in LA Headquarter

## 2018

Established Reefer Facility in Headquarter

## 2020

Established Distribution Center in Santa Fe Springs, CA  
Established Warehouse in Puebla, Mexico  
Seattle Branch Moved to New Warehouse with Reefer Facility  
Established TNA NJ branch Office

## 2022

Established Dallas Branch

## 2023

Relocation of Chicago with Warehouse Expansion

## 2024

Established TNA Mexico LTL Operation Office

## 2025

Established TNA Mexico Office  
Relocation of SFS Branch to Cerritos  
Established Warehouse in Vancouver, Canada

# Global Presence

---

Our Network Map

Los Angeles, The Central Command of Binex

USA Coast-to-Coast Coverage

Canada Expansion, Stronger Connections

Mexico Rising Hub

Korea Real-Time, First Connect

---



# Our Network Map

## USA

- Seattle
- San Francisco
- Cerritos
- Los Angeles
- Dallas
- Houston
- Chicago
- Detroit
- Atlanta
- Montgomery
- Miami
- New Jersey
- New York

## Canada

- Vancouver
- Toronto

## Mexico

- Monterrey
- Apodaca
- Silao
- Puebla

## Korea

- Seoul

-  Warehouse & Office
-  Office



# Los Angeles, The Central Command of Binex



## “ Creating Superior Values for ”

Customers, Agents, Vendors

Colleagues

Communities

### **Address**

19515 S. Vermont Ave Torrance, CA 90502

### **WH CAPA**

55,000 sq ft

### **Group E-mail**

[lax@binexline.com](mailto:lax@binexline.com)

The Binex headquarters serves as the central hub overseeing all North American branch operations. In addition to Accounting, Human Resources, and IT, it houses key departments such as Compliance and Strategic Planning, which support company-wide policies and long-term growth. The facility also manages inland transportation, import and export operations, and warehouse management.

The headquarters employs approximately 65 staff and includes a 55,000-square-foot warehouse facility. Equipped with reefer and freezer storage, the warehouse handles temperature-sensitive and perishable cargo. Through this integrated structure, Binex effectively combines administrative management with logistics operations.

# USA Coast-to-Coast Coverage

Binex has established strong operational bases in major U.S. hub cities, creating a nationwide network that supports diverse customer needs. This strategic network enables fast response and reliable service across the United States. Binex also operates warehouses in Los Angeles, Seattle, and Chicago, providing coverage across both the West and East Coasts while supporting international and domestic logistics flows.

Through this integrated network, Binex delivers seamless logistics solutions and strengthens its position as a trusted supply chain partner.



### Seattle Office & Distribution Center

**Address :** 22718 Russell Rd, Kent, WA 98032  
**WH CAPA :** 36,000 sq ft  
**Group E-mail :** sea@binexline.com



### Chicago Office & Warehouse

**Address :** 1030 W. Thorndale Ave, Itasca, IL 60143  
**WH CAPA :** 49,000 sq ft  
**Group E-mail :** chi@binexline.com

### San Francisco Office

**Address :** 320 Corey way, South San Francisco CA 94080  
**Group E-mail :** sfs@binexline.com

### Detroit Warehouse

**Address :** 2280 Turner NW Grand Rapids, MI 49544 (3rd Party WH)  
**Address :** 4001 Gantz Road Suite A Grove City, OH 43123 (3rd Party WH)



### LA HQ Office & Warehouse



### Santa Fe Springs Fulfillment Center

**Address :** 17911 Valley View Ave Cerritos, 90703  
**WH CAPA :** 105,000 sq ft  
**Group E-mail :** sfs@binexline.com

### New York Office

**Address :** 147-19 Springfield LN. 2nd FL Jamaica, NY 11413  
**Group E-mail :** jfk@binexline.com

### New Jersey Office

**Address :** Two Executive Dr. Suite #285 Fort Lee, NJ 07024  
**Group E-mail :** nyc@binexline.com

### Atlanta Office

**Address :** 2150 Boggs Road Suite 120 Duluth, GA 30096  
**Group E-mail :** atl@binexline.com

### Montgomery Office

**Address :** 4001 Carmichael Rd, Suite# 580, Montgomery, AL 3610  
**Group E-mail :** mgm@binexline.com

### Miami Office

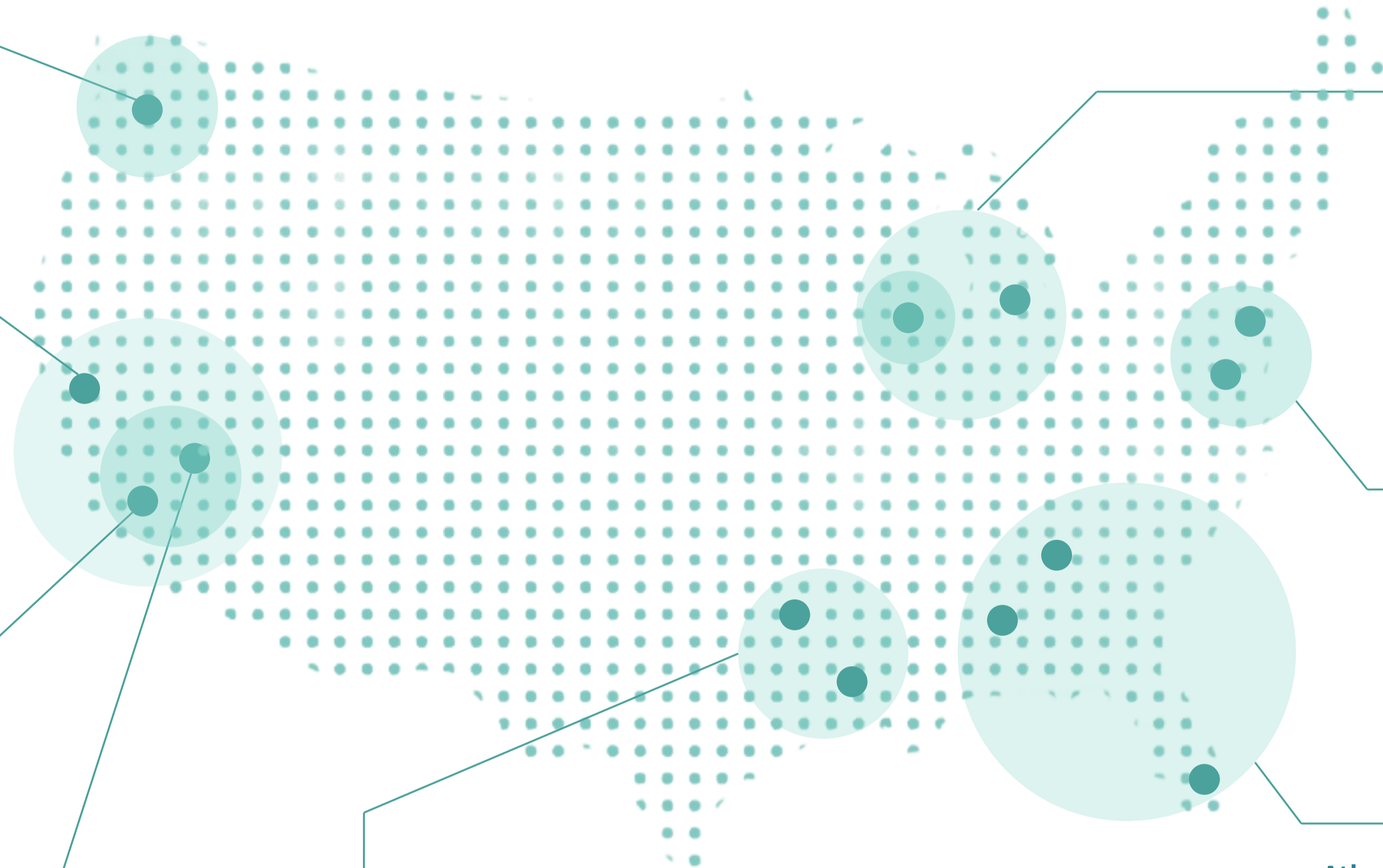
**Address :** 6175 NW 167 St Unit G17 Hialeah FL 33015  
**Group E-mail :** mia@binexline.com

### Dallas Office

**Address :** 8101 Tristar Dr. Unit 112 Irving, TX 75063  
**Group E-mail :** dfw@binexline.com

### Houston Office

**Address :** 13201 Northwest Freeway, Suite 480 Houston. TX. 77040  
**Group E-mail :** hou@binexline.com



# Canada Expansion, Stronger Connections



Toronto Warehouse & Office

## Toronto Office & Warehouse

**Address :** 1550 Courtneypark Dr. East Mississauga, ON, L5T 2C7, Canada

**WH CAPA :** 74,000 sq ft

**Group E-mail :** tor@binexline.com

## Vancouver Office

**Address :** 13480 Crestwood Place, Richmond, BC V6V 2J9, Canada

**WH CAPA :** 35,000 sq ft

**Group E-mail :** van@binexline.com



Vancouver warehouse & Office

Binex is expanding its Canadian operations through its Toronto and Vancouver branches, strengthening its presence in the North American market.

The Toronto branch operates a 74,000 sq ft integrated logistics center with a bonded CFS, providing ocean, air, and warehousing services. Its ocean division manages import cargo including FAK, FCL, and LCL shipments, while the air division handles consolidation exports and complex customs clearance through an in-house team. The branch also provides 3PL services such as bonded warehousing, inventory management for automotive and EV parts, and B2B/B2C logistics for cosmetics and SME products.

The Vancouver branch operates a 35,000 sq ft warehouse and serves as a gateway for Western Canada, supporting regional, cross-border, and global transportation. Through this network, Binex continues to strengthen its role as a trusted logistics partner with nationwide Canadian coverage.

# Mexico Rising Hub



## Monterrey Office

**Address** Av. Pedro Ramirez Vazquez #200 Torre 2, Piso 1. Col. San Pedro Garza Garcia, Monterrey, Nuevo Leon, Mexico, 66269

**Group E-mail :** mty@binexline.com

## Group E-mail

mexico@binexline.com

Binex continues to strengthen its presence in Mexico, positioning the country as a strategic rising hub within its global logistics network. With three 3PL warehouses and four offices strategically operating across key industrial regions — Monterrey, Silao, and Puebla — Binex has established a robust operational foundation capable of supporting both domestic and international logistics.



## Apodaca Logistics Center

**Address**  
Parque Industrial OMA VYNMSA Lote 21-23, Blvd. Aeropuerto Km.8, Cd. Apodaca, NL México, 66000

**WH CAPA :** 113,000 sq ft

**Group E-mail :** apo@binexline.com



## Silao Logistics Center

**Address**  
Avenida Libre Comercio #125, Parque Industrial Santa Fe III, Silao de la Victoria, Guanajuato, Mexico, 36276

**WH CAPA :** 55,000 sq ft

**Group E-mail :** sil@binexline.com



## Puebla Logistics Center

**Address**  
Tule, Lote 39, Etapa 7, Nave 4, Cuautlancingo, Parque Industrial FINSA, Puebla, Mexico, 72710

**WH CAPA :** 60,000 sq ft

**Group E-mail :** pue@binexline.com

## IMMEX License — Customer Benefits

Benefit Category	Customer Value
<b>Duty Deferment</b>	Lower upfront costs by deferring import duties on temporary imports
<b>VAT Exemption on Exports</b>	Lower raw material costs by eliminating VAT liability on export transactions
<b>Inter-IMMEX Transfers</b>	Flexible cargo transfers between IMMEX-certified companies
<b>VAT Credit Benefit</b>	Improved cash flow through VAT input tax credits on imported materials
<b>Bonded Warehouse</b>	Support for storage of customs-cleared cargo, inventory control, and flexible logistics operations

# Korea Real-Time, First Connect

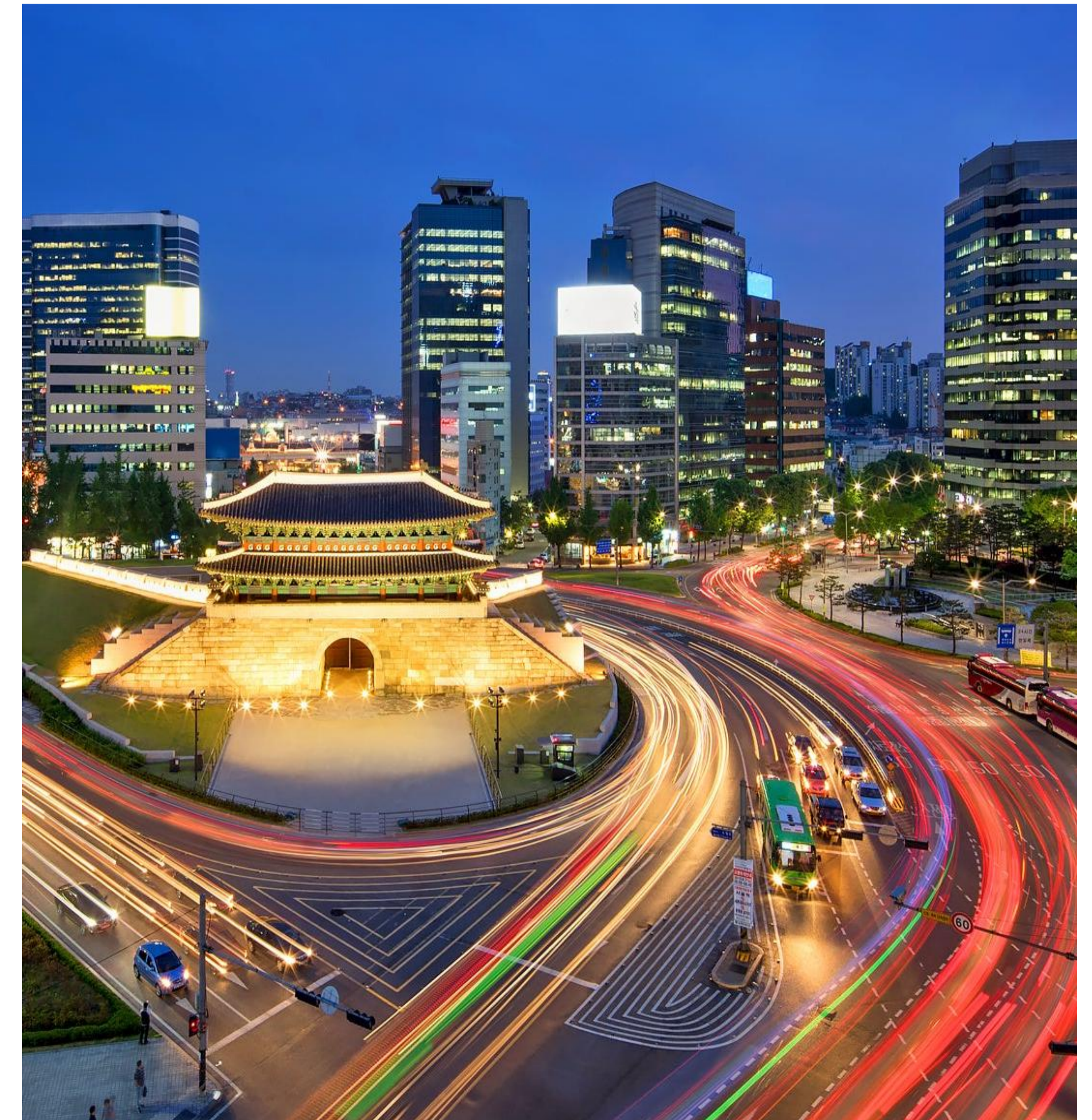
## “Frontline for Customer”



Binex operates a Seoul office in Mapo-gu, Gongdeok-dong, serving as a dedicated support hub for customers in Korea. The office provides responsive support and real-time communication, quickly addressing inquiries while bridging the time difference between Korea and the United States as a key first-contact point.

Beyond support, the Seoul office serves as a customer interface that reflects local market needs within Binex’s global operations and supports the strategic expansion of its U.S. headquarters. It also facilitates collaboration between Korean partners and global teams, helping ensure Korean customers receive the same high-quality services available across the Binex global network.

<b>Customer Proximity</b> Local Support & Face to Face Service	<b>Trust-Based Relationships</b> Long-Term Trusted Partnerships	<b>Strategic Market Gateway</b> Gateway Between Asia and North America
<b>Time Zone Bridge</b> Real-Time: Korea – North America	<b>Dedicated Support Team</b> Personalized and attentive customer service	<b>Agility &amp; Responsiveness</b> Fast response to Urgent shipments



### Korea Office

Address : 136, Mapo-Daero F5, Mapo-gu, Seoul, Rep. of Korea

Group E-mail : kor@binexline.com



# End to End

---

Global Ocean Freight  
Seamless Air Cargo  
Customs & Compliance Advisory  
North America Inland Freight Solutions  
Cross-Border Trucking Solutions

---

•••••  
End to End

# Global Ocean Freight

## Service

FCL / LCL / Reefer Cargo / Project Cargo

## Binex Air Freight Strengths

### NVOCC

Binex manages one of the largest cargo volumes on Korea-U.S. trade lanes, enabling competitive freight rates through strong volume leverage.

### Network & Coverage

Through direct offices and partner networks, Binex provides Asia to America coverage across major with direct service to key ports such as LA, Seattle, Vancouver, and New York.

### Carrier Contracts

Through contracts with major global ocean carriers, Binex secures stable capacity and priority space during peak seasons, ensuring reliable shipments.

### Comprehensive Freight Solutions

Binex provides integrated one-stop logistics solutions covering ocean freight, trucking, warehousing, and customs clearance, while safely handling special cargo including DG, reefer, and high-value shipments.

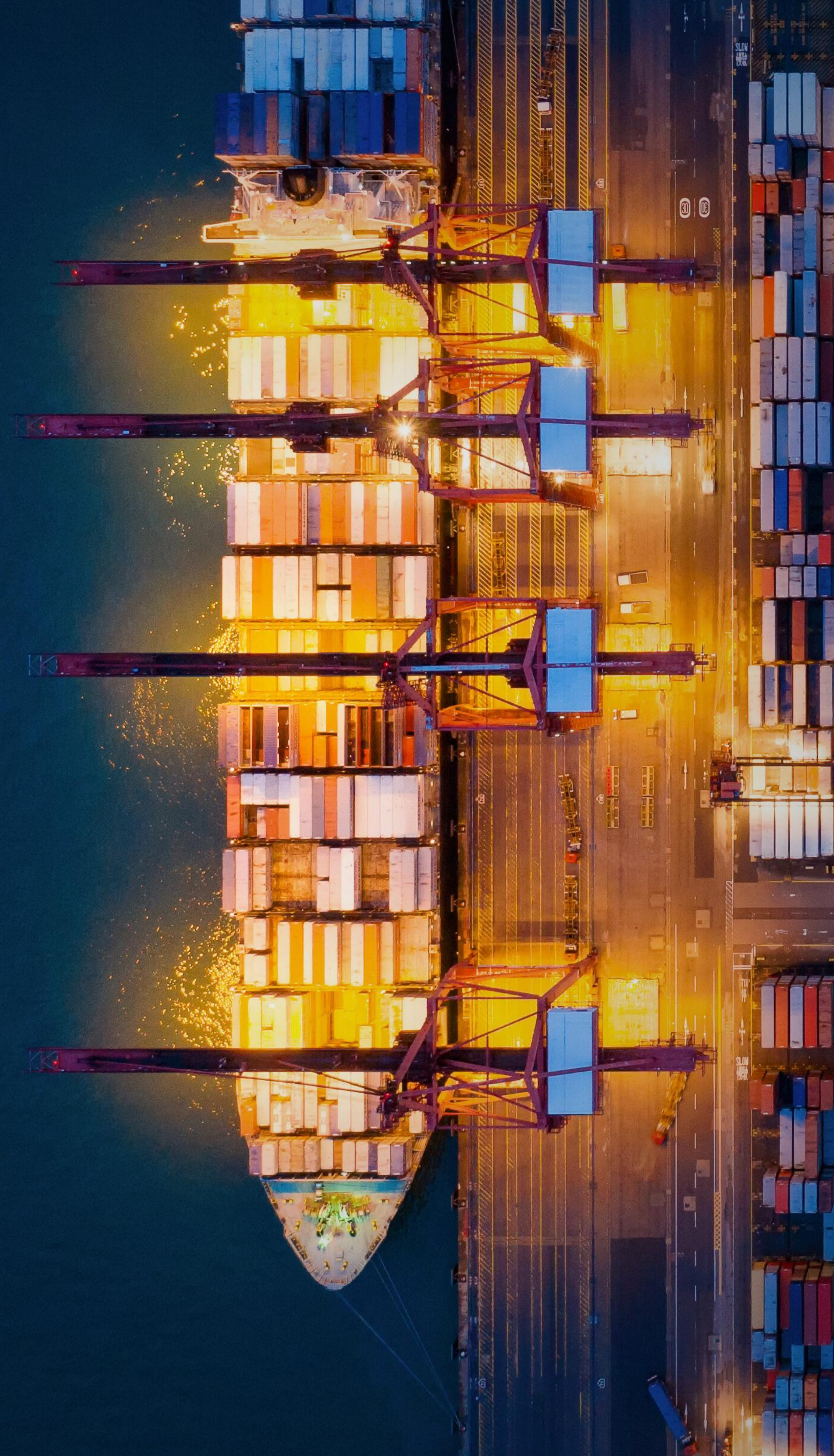
Ocean Import

**66,200 TEU**

Ocean Export

**27,000 TEU**

(as of 2025)



•••••  
End to End

# Seamless Air Cargo

## Service

On-Time Delivery / Consolidation / Special Cargo Handling

## Binex Air Freight Strengths

### Time-Critical Handling

Binex provides immediate response for urgent shipments of priority cargo, including medical devices and critical industrial components, ensuring fast, reliable transport and on-time delivery as our top service priority.

### Perishable Expertise

With strong expertise in fresh produce logistics, Binex maintains product quality and freshness throughout the entire transport process through its proven cold chain capabilities.

### Air Console Service

Through in-house console operations at major North American airports, Binex secures stable air capacity and cost efficiency. Our long-standing airline partnerships ensure reliable space even during peak seasons.

### End-to-End Visibility

Through real-time tracking and monitoring with door-to-door shipment management, Binex provides end-to-end visibility. We also support customized reporting services for our customers.

(as of 2025)

Air Import

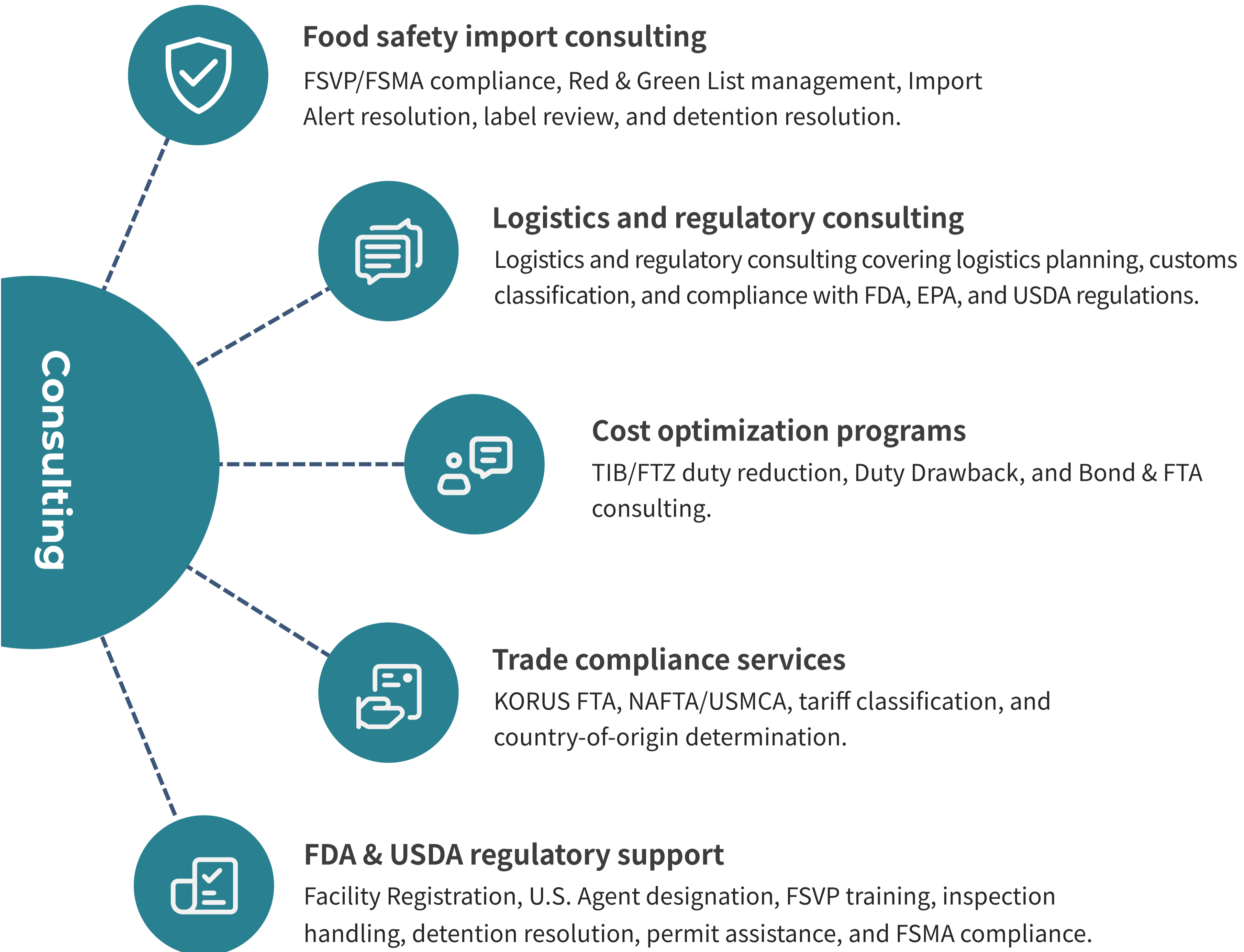
**3,800 tons**

Air Export

**9,100 tons**



# Customs & Compliance Advisory



## Customs Clearance

### Duty Savings

Duty Drawback support and In-bond (IT, IE, T&E) transportation consulting to optimize cross-border logistics and customs processes.

### Bond & Security

Surety Bond issuance and ongoing management support for customs and trade compliance.

### Regulatory Compliance

Support for anti-dumping and countervailing duty matters, tariff classification, and customs regulation review.

### Customs Entry Filing

Support for AMS (Automated Manifest System), ISF (Importer Security Filing), Section 321, remote clearance, Carnet, and TIB filings.

•••••  
End to End

# North America Inland Freight Solutions

## TNA - Trans North America

### Forwarding-based expertise

As a forwarding-driven integrated trucking company, we deliver specialized services designed for forwarder needs and provide customized solutions for complex logistics requirements.

### Seamless transportation across North America

Through trucking and container drayage brokerage operations, we provide seamless transport services across the U.S., Canada, and Mexico, ensuring cross-border reliability and end-to-end shipment visibility.

### Bonded transportation services

As a Carrier Bonded licensed company, we support bonded transport and smooth customs clearance across North America, minimizing border delays.

### Operational flexibility & competitive rates

Leveraging in-house resources, we maintain operational flexibility and strong cost competitiveness, balancing service reliability and cost efficiency.



# Cross-Border Trucking Solutions

## Three Cross-Border Trucking Solutions

Binex provides seamless cross-border trucking between the U.S. and Mexico through three tailored service models. The Through Truck option ensures uninterrupted door-to-door transport with a single truck, delivering maximum reliability. Drop & Hook reduces border wait times through rapid trailer exchange, improving speed and efficiency. Cross-Dock transloading offers a cost-effective and flexible solution to optimize cargo flow and distribution.

By combining reliability, speed, and cost efficiency, Binex enables customers to select the most effective logistics solution to support business growth.



## Through Service

Provides uninterrupted door-to-door transport to the final destination using a single truck.



## Trailer Interchange

Trailer exchange at the border to reduce transit time and maximize operational efficiency.



## Transloading

Provides cost-efficient flexibility through Cross-Dock transloading services.





# Differentiators

---

Fresh Cargo Expertise

E-Commerce & Fulfillment Solutions I

Fulfillment & E-Commerce Solutions II

Visible & Digital Logistics

Product-Specific Tailored Services

---

# Fresh Cargo Expertise



Binex focuses on connecting fresh produce to Asian markets quickly and reliably. Each season, products such as cherries, grapes, and avocados are shipped via air and ocean freight to Korea, China, Japan, Taiwan, and the Philippines.

Our top priority is maintaining freshness throughout the entire transport chain. With a robust global logistics network and proven cold chain system, Binex ensures cargo arrives in optimal condition. Air freight is used for urgent, time-sensitive shipments, while ocean freight provides cost-efficient transport for larger volumes.

As demand for fresh food across Asia continues to grow, Binex goes beyond transportation—delivering quality, reliability, and trusted logistics partnership to our customers.

# E-Commerce & Fulfillment Solutions I



---

## Marketplace Onboarding Expertise

Provides onboarding support based on operational experience with Amazon, Shopify, and TikTok Shop, minimizing initial setup risks through product listing, account setup, and order & inventory synchronization.

---

## Integrated Logistics & E-Commerce Solutions

Provides End-to-End logistics and eCommerce support, optimizing the entire supply chain from forwarding, customs clearance, inland transport, to warehousing operations.

---

## Launch & Growth Enablement

Supports initial platform operations and stabilization, helping build a strong foundation for long-term business growth.

---

## Trusted KOTRA Partner

Recognized as a trusted partner supporting Korean companies entering the U.S. market, Binex works closely with KOTRA to facilitate overseas expansion. Through KOTRA support programs, we help optimize eCommerce and fulfillment costs in the United States

# Fulfillment & E-Commerce Solutions II

## Key Offerings



### Inbound & Inventory

Real-time synchronization & process automation



### Returns

Returns management supporting customer satisfaction



### Order Processing

Fast multi-channel order fulfillment



### Packaging & Branding

Customized packaging & kitting services



### Shipping

Rapid last-mile delivery

## Binex provides integrated logistics solutions for e-Commerce businesses.

Through real-time inventory synchronization and automated systems, we manage inbound and inventory efficiently, process multi-channel orders quickly, and support customized packaging. We also offer same-day and next-day delivery across the U.S., global shipping, and streamlined returns services.

These capabilities help reduce costs and enhance customer satisfaction, while delivering flexible logistics solutions for businesses at every stage—from startups to large-scale sellers.



# Visible & Digital Logistics

## Order Status Visibility

Provides WMS-based visibility for each fulfillment stage

## Inventory Accuracy & Control

Supports location-based inventory management with full tracking of inventory movements

## KPI & Operational Reporting

Provides regular reports on key metrics, including inbound/outbound status, inventory levels, and operational workload.

## System Integration Support

Provides data integration support aligned with customer OMS, ERP, and marketplace systems

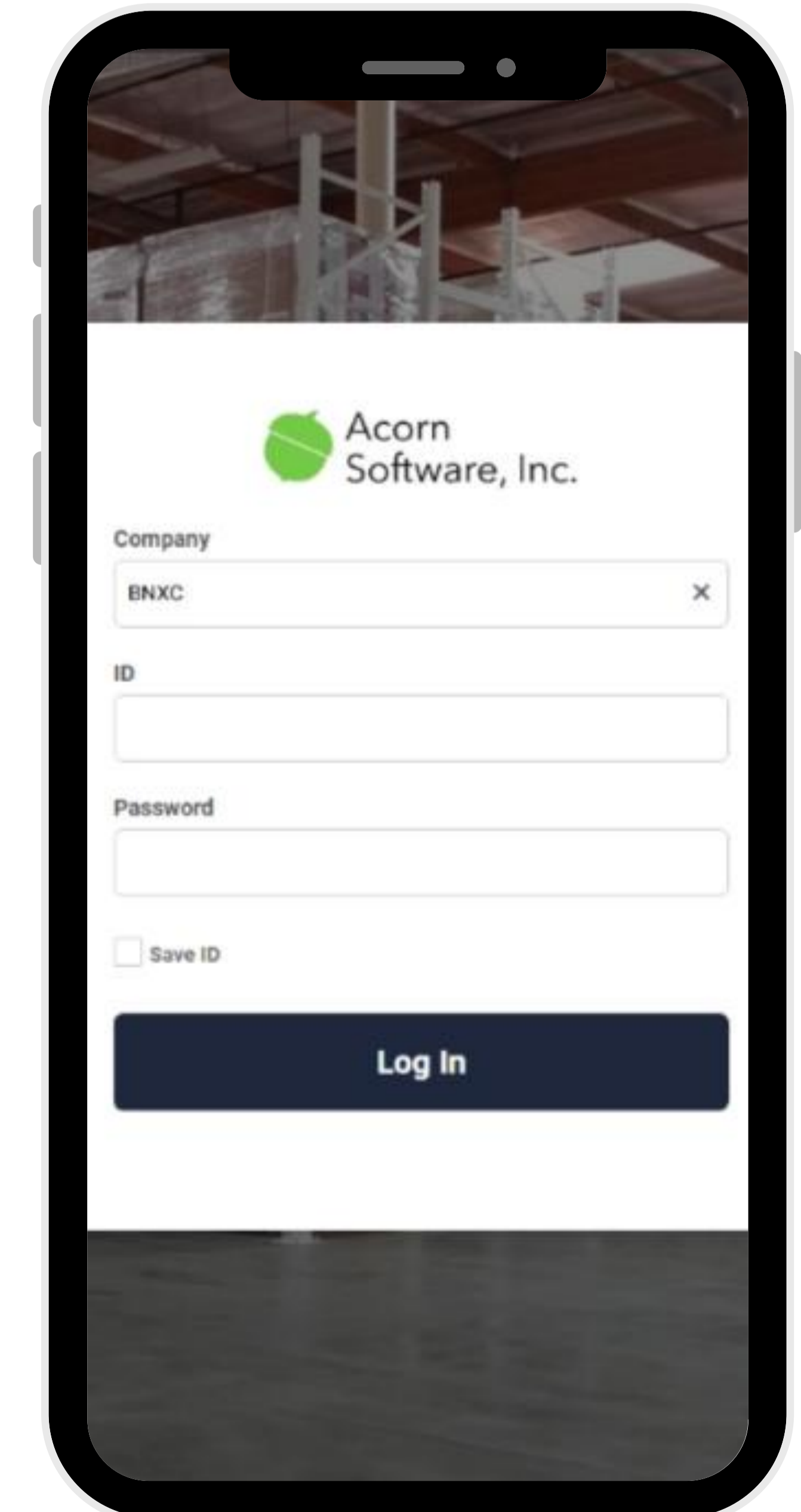
## Exception Handling & CS Coordination

Operates exception handling processes for cases such as out-of-stock, hold, address errors, and label issues

Binex improves demand forecasting through sales pattern and inventory turnover analysis, supported by automated safety stock and replenishment management for efficient operations.

Using FEFO/FIFO-based outbound control, we minimize excess inventory and product disposal, maximizing inventory value and operational efficiency.

No.	Status	Freight Status	Order No.	PO No.	Account	Estimated Ship Date	Actual Ship Date	Order Qty	Shipped Qty
1	Picking Ready	Name	binex 123-9915.5		BNXN FOOD	09-23-2025	09-23-2025	8	0
2	Open	Name	binex 123-9915.5		BNXN FOOD	09-23-2025		4,800	0
3	Shipping Complete	Name	H03219915VERMONT 124		BNXN FOOD	08-25-2025	08-25-2025	13,682	13,682
4	Shipping Complete	Name	binex 123-9915.5		BNXN FOOD	08-19-2025	08-27-2025	718	718
5	Shipping Complete	Name	binex 123-9915.5		BNXN FOOD	07-19-2025	07-19-2025	360	360
6	Shipping Complete	Name	binex 123-9915.5		BNXN FOOD	07-09-2025	07-10-2025	3,370	3,370
7	Shipping Complete	Name	binex 123-9915.5		BNXN FOOD	06-11-2025	06-12-2025	7,230	7,230
8	Shipping Complete	Name	321 19 915 VERMONT 124		BNXN FOOD	06-03-2025	06-03-2025	3,816	3,816
9	Shipping Complete	Name	binex 123-9915.5		BNXN FOOD	05-07-2025	05-07-2025	30	30
10	Shipping Complete	Name	binex 123-9915.5		BNXN FOOD	05-05-2025	05-05-2025	4,010	4,010
11	Shipping Complete	Name	binex 123-9915.5		BNXN FOOD	03-27-2025	03-27-2025	3,500	3,500



# Product-Specific Tailored Services

Binex Chemlogis, established in October 2023, specializes in chemical logistics solutions. In partnership with Asia-based tank operators, we have built a global ISO tank service network. Our handled products include TDI, MDI, Polyol, food-grade products, cosmetics, resins, paints, inks, and solvents, with specialized service for hazardous cargo such as toxic, flammable, corrosive, and temperature-sensitive materials. Binex Chemlogis provides ISO tank transportation linking the U.S. with Asia, Europe, South America, the Middle East, and South Asia.

## Service

### Import

- Customs clearance
- Inland Drayage
- Railcar booking service
- Loaded storage
- Product heating service
- Movement management
- Technical service

### Export

- Container preparation
- Inland drayage
- Loaded storage
- Shipping line booking
- Customs clearance
- Technical support service

### Management

- Tank container cleaning
- Residue disposal
- Tank container repair
- Empty tank storage
- Report stock status(Daily)
- Development of IT system

## Product type



SOLID



POWDER



LIQUID

## Packaging type



# Product-Specific Tailored Services

## Insulated packaging solution

Uses high-performance insulated packaging to preserve quality for temperature-sensitive ocean cargo such as wine.

## Perishable air cargo

Provides temperature-controlled air cargo services for fresh food and pharmaceuticals, maintaining stable temperature from origin to destination while minimizing transit delays.

## Auto parts solution

For automotive parts logistics, Binex ensures stable ocean freight capacity and reliable inland transport, helping prevent supply chain disruptions.

## Oversized/Overhang

For heavy equipment and oversized cargo, Binex develops site-based transport planning and deploys specialized trailers and experienced personnel to ensure safe and reliable transportation.

### Wine

Liquor licensing and temperature-controlled packaging solutions.



### Auto Parts

20+ years of experience in automotive parts logistics.

### Cosmetics

Supporting sales growth through global e-Commerce channels.



### Cherry

Annual export volume exceeding 5,000 tons.

### Overhang

Special cargo transport in partnership with airlines.



# Beyond Logistics

---

Stories of Success  
Certified for Excellence  
Social Responsibility

---



# Stories of Success

## Overcoming Challenges - live lobsters & eel

Before the launch of Korean Air's direct Halifax-Incheon service, transporting fresh seafood such as live lobster and live eel from Halifax to Korea were complex.

The only option was interline transfer via Toronto, moving cargo from Halifax to Toronto through other airlines before connecting to Korean Air flights to Incheon. As shipments typically arrived in Toronto around 3-4 AM, immediate labeling and inspection were required prior to transfer.



At the time, the Toronto branch was newly established and still stabilizing operations. Despite this, the dedicated team worked overnight at the airport, handling labeling, cargo inspections, and shipment checks to ensure all cargo was ready for the next leg of transport.

Through this commitment and effort, Binex Toronto built a strong reputation as the only Korean forwarder successfully handling live lobster and live eel shipments between Halifax and Incheon. This achievement not only demonstrated the team's ability to overcome early operational challenges but also laid the foundation for Binex's strong presence in the Canadian logistics market today.

# Certified for Excellence

## Certificate



Ocean Transportation  
Intermediary License



Certificate of  
Membership

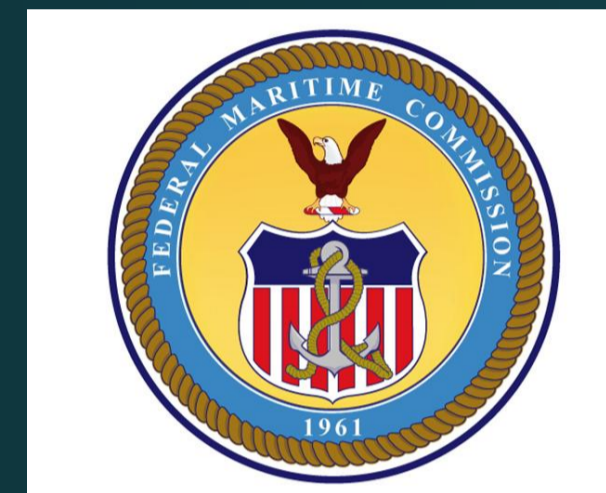


HACCP-based Good  
Distribution Practices  
(GDPs) Program Certificate



Customs-Trade Partnership  
Against Terrorism (C-TPAT)  
Certificate

## License



Ocean Freight  
Freight Forwarder  
N.V.O.C.C



Air Freight  
IATA Agent  
ICA/FAA



Trucking  
Transportation Broker  
(TNA-Trans North America)



Customs Clearance  
US Customs Broker  
(In-House: Andrew Park CHB)

## Presidential Commendation

Awarded by the President of South Korea



# Certified for Excellence

## Logistics Partner

### Air Partner



### Ocean Partner



# Social Responsibility



Binex believes that true success is measured not only by growth or profit, but by the positive impact we create for people and communities. Corporate Social Responsibility (CSR) is central to our values and reflects our commitment to act with care, authenticity, and responsibility beyond business.

We see ourselves not simply as a logistics company, but as a partner in building stronger, healthier communities. Guided by this philosophy, we extend support to children in need, vulnerable families, and communities facing significant challenges.

Through trusted partnerships, employee volunteerism, and corporate giving, Binex strives to create opportunities, restore dignity, and inspire hope—believing that even small acts of kindness can create meaningful change.



- Children's Miracle Network Hospitals
- Brittany's Hope Foundation
- Han-Schneider International Children's Foundation
- Yakima Union Gospel Mission – Madison House
- Hunter's Hope Foundation
- Grace Community Service (GCS)
- Mission to Promote Adoption of Kids (MPAK)
- Spectrum of Hope Foundation

# How to Reach Our Branches

## USA

Los Angeles	<a href="mailto:lax@binexline.com">lax@binexline.com</a>
Seattle	<a href="mailto:sea@binexline.com">sea@binexline.com</a>
San Francisco	<a href="mailto:sfo@binexline.com">sfo@binexline.com</a>
Santa Fe Springs	<a href="mailto:sfs@binexline.com">sfs@binexline.com</a>
Dallas	<a href="mailto:dfw@binexline.com">dfw@binexline.com</a>
Houston	<a href="mailto:hou@binexline.com">hou@binexline.com</a>
Chicago	<a href="mailto:chi@binexline.com">chi@binexline.com</a>
Detroit	<a href="mailto:det@binexline.com">det@binexline.com</a>
Atlanta	<a href="mailto:atl@binexline.com">atl@binexline.com</a>
Montgomery	<a href="mailto:mgm@binexline.com">mgm@binexline.com</a>
Miami	<a href="mailto:mia@binexline.com">mia@binexline.com</a>
New Jersey	<a href="mailto:nyc@binexline.com">nyc@binexline.com</a>
New York	<a href="mailto:jfk@binexline.com">jfk@binexline.com</a>

## Canada

Vancouver	<a href="mailto:van@binexline.com">van@binexline.com</a>
Toronto	<a href="mailto:tor@binexline.com">tor@binexline.com</a>

## Mexico

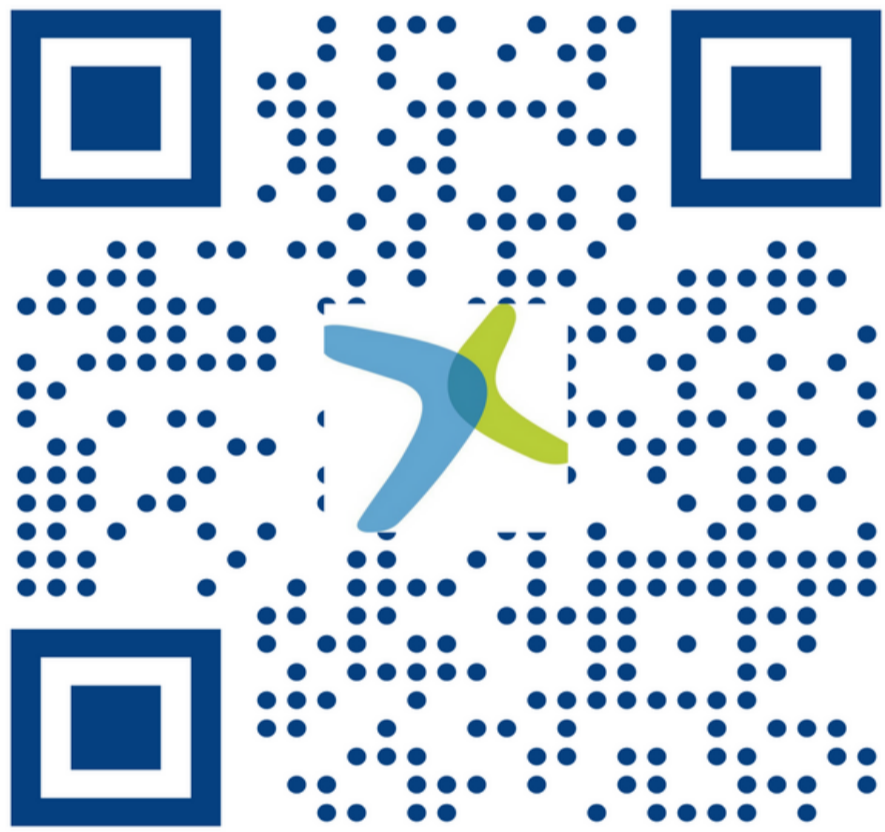
Mexico	<a href="mailto:mexico@binexline.com">mexico@binexline.com</a>
Monterrey,	<a href="mailto:mtty@binexline.com">mtty@binexline.com</a>
Apodaca	<a href="mailto:apo@binexline.com">apo@binexline.com</a>
Silao	<a href="mailto:sil@binexline.com">sil@binexline.com</a>
Puebla	<a href="mailto:pue@binexline.com">pue@binexline.com</a>

## Korea

Seoul	<a href="mailto:kor@binexline.com">kor@binexline.com</a>
-------	--

## WB & PRICING

Westbound	<a href="mailto:westbound@binexline.com">westbound@binexline.com</a>
EB Pricing	<a href="mailto:rates@binexline.com">rates@binexline.com</a>



Binex Website

# MISSION STATEMENT

**"CREATING SUPERIOR VALUES FOR"**

- 1. Customers, Agents, Vendors**
- 2. Colleagues**
- 3. Communities**