



HUMAN TOUCH | VALUE CREATING | e-LOGISTICS

[Please click "The detail Introduction to business"](#)



Founded:

January 1995



Licensed

Freight Forwarder

N.V.O.C.C



Licensed

**IATA Agent
IAC/FAA**



Licensed

US Customs Broker

(In-House: Andrew Park CHB-Binex wholly owned)



Licensed:

Transportation Broker

(**TNA**-Trans North America-Binex wholly owned)



Certified

Member Since 2001



Employing:

About 250 People



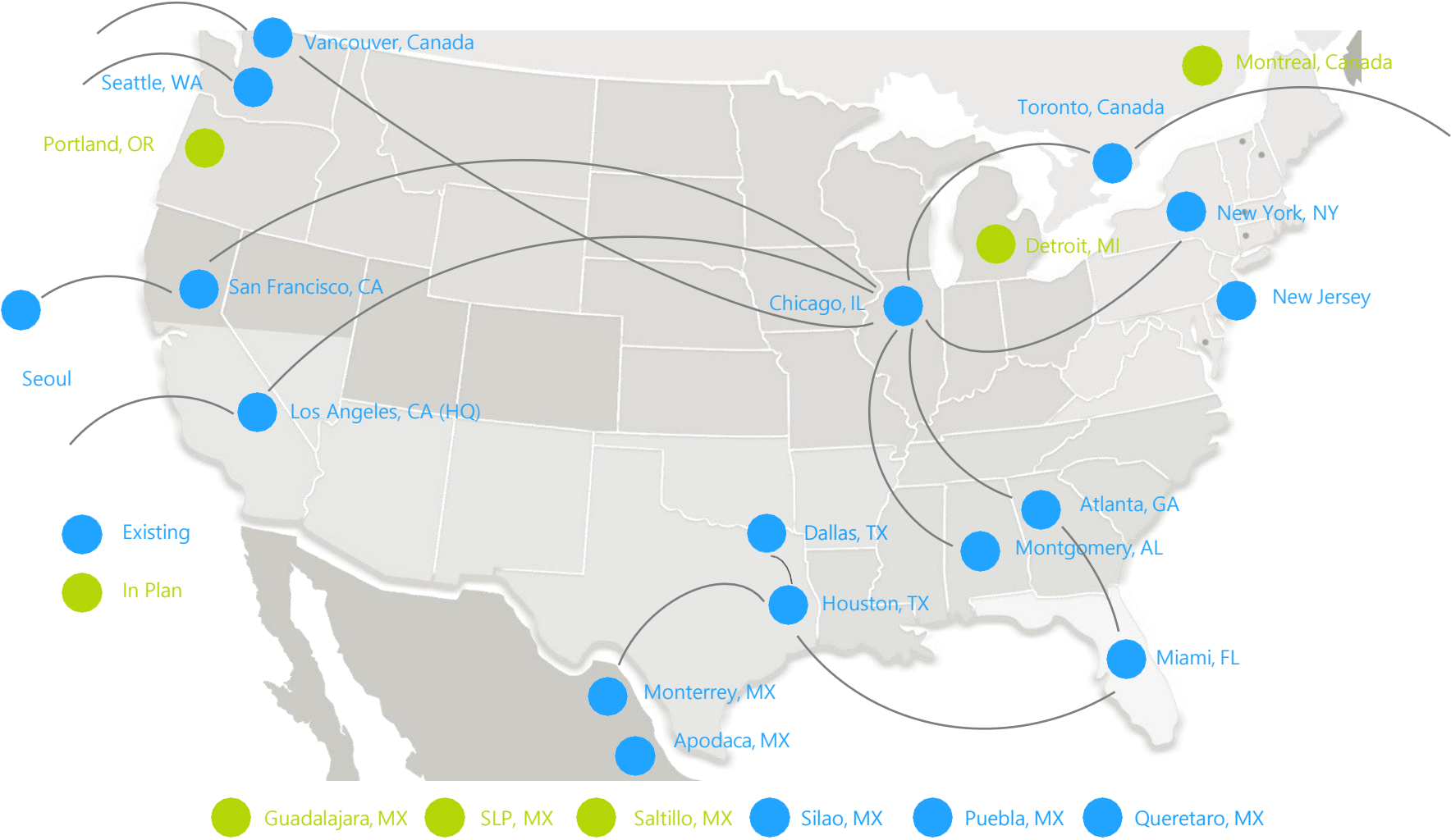
**USA(12): LA/SFO/SEA/CHI/NYC/NJ/
ATL/MGM/MIA/HOU/DFW/SFS**

Canada(2): Toronto/Vancouver

**Mexico(5): Monterey/Apodaca/
Sillao(Leon)/Puebla/Queretaro**

Korea(1): Seoul

Nationwide Strategic Locations & Gateways



HQ Torrance Office & Distribution Center

- 55,000 sq ft warehouse
- ABC licensed
- HACCP Certified (Food Grade Warehouse)
- Available Reefer & Freezer storage



Torrance, CA (HQ)



SCS Global Services does hereby certify that an independent assessment has been conducted on behalf of:

Binex Line Corporation

19515 S. Vermont Avenue, Torrance, CA, 90502, United States

This company developed, maintains, and administers a

HACCP-based Good Distribution Practices (GDPs) Program

Product Scope: Soft Drinks and RTE Snacks

Audit Date: 01/21/2022

Certificate Expiry Date: 04/05/2023

Re-audit Window: 12/21/2022 - 02/21/2023



The certification audit includes a program review and performance evaluation of the site's Food Safety Program. Audit of the program is based on 21 CFR Parts 117 Good Distribution Practices (GDPs) and the operation's stated program requirements.

SCSglobal
SERVICES

Jim Krutzon

Jim Krutzon
Vice President

2000 Powell Street, Ste. 600, Emeryville, CA 94608 USA, (510) 452-8000



Seattle Office & Distribution Center



- 38,000 sq ft warehouse
- Bonded CFS
- HACCP Certified(Food Grade Warehouse)
- Available Reefer storage



SCS Global Services does hereby certify that an independent assessment has been conducted on behalf of:

Binex Line Corporation

22718 Russell Road Kent, Washington 98032 USA

This company developed, maintains, and administers a

HACCP-based Good Distribution Practices (GDPs) Program

Product Scope: Ambient Dry Storage

Rating: Fair

Audit Date: September 27, 2022

Certificate Expiry Date: November 11, 2023

Facility ID #: 80005A36-1642028007



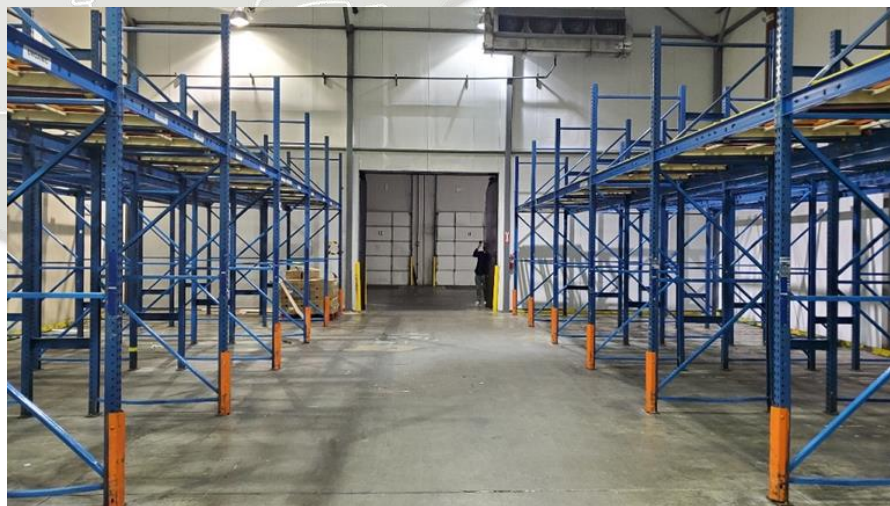
The certification audit includes a program review and performance evaluation of the site's Food Safety Program. Audit of the program is based on 21 CFR Parts 117 Good Distribution Practices (GDPs) and the operation's stated program requirements.



Jim Knutson

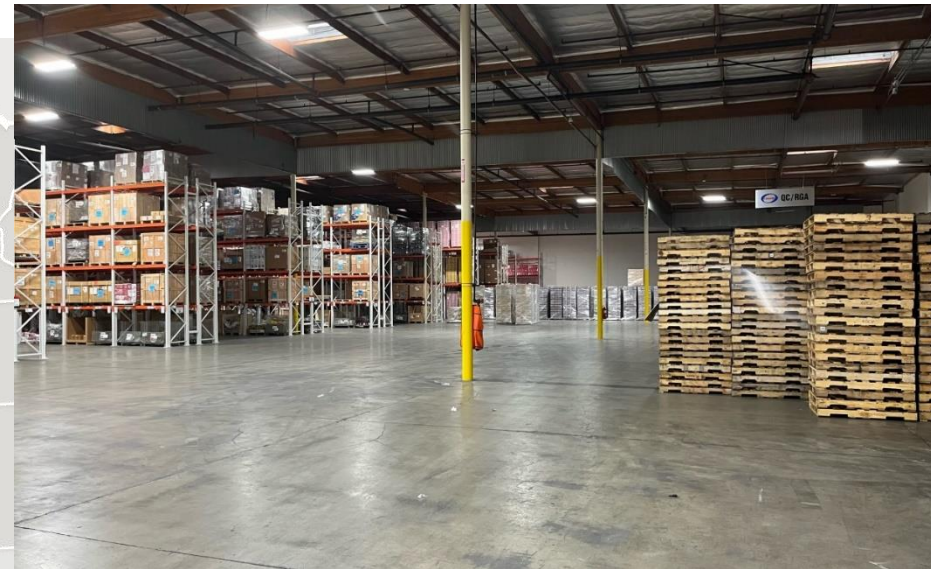
Jim Knutson
Vice President

2000 Powell Street, Ste. 600, Emeryville, CA 94608 USA, (510) 452-8000



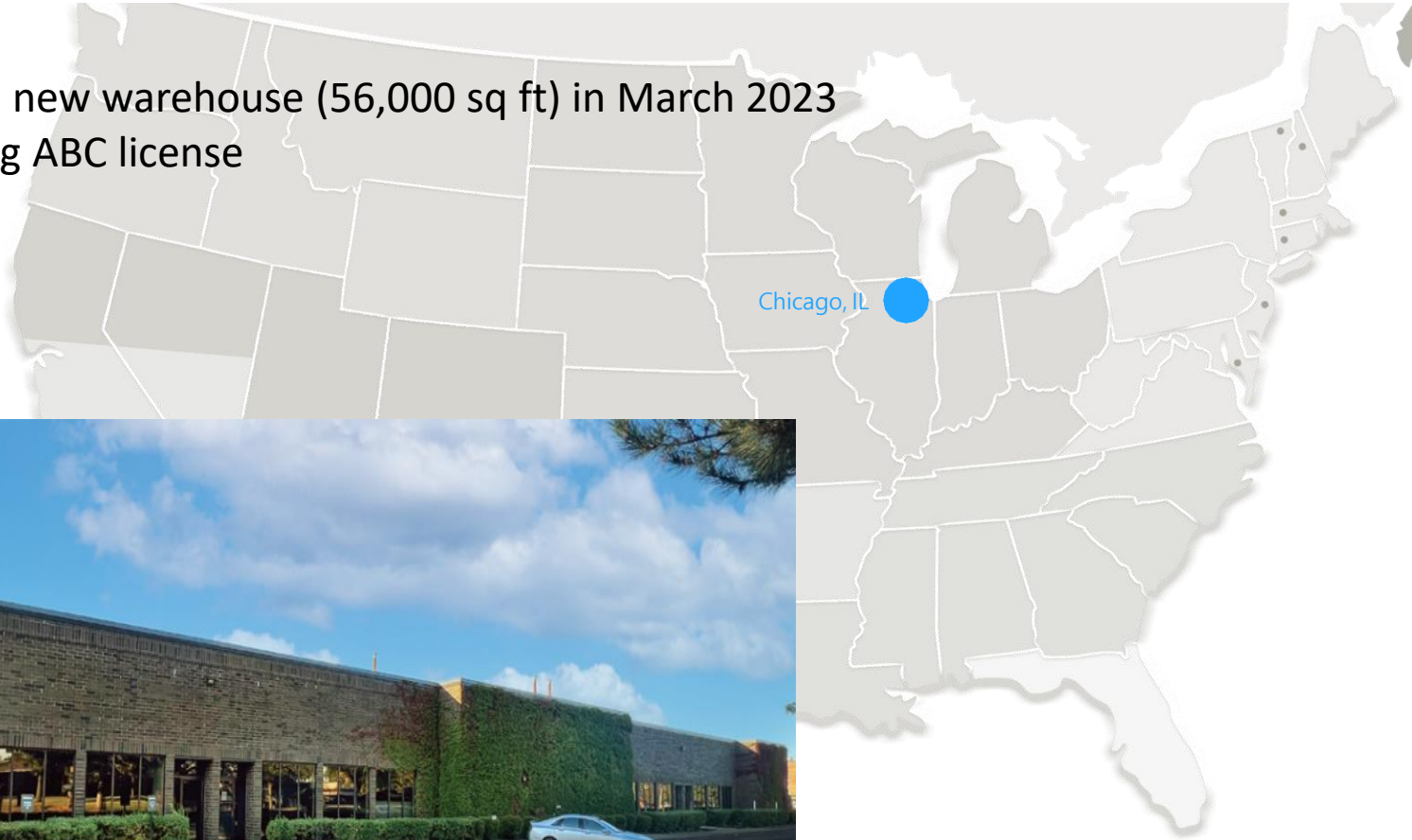
Santa Fe Spring Fulfillments Center

- Total 155,000 sq ft warehouse, 20,000 ~ 30,000 sq ft space can be available for about 800 ~ 1,000plts
- ABC licensed



Chicago Office & Warehouse

- Moving into new warehouse (56,000 sq ft) in March 2023
- In processing ABC license
- Bonded CFS



Canada Office & Warehouse

 Vancouver, BC Canada

- 125,000 sq ft warehouse
- Bonded CFS
- Auto Part Management
- KOTRA Logistics Partner

Toronto, ON Canada 



Mexico Office & Warehouse



Monterrey Logistics Center



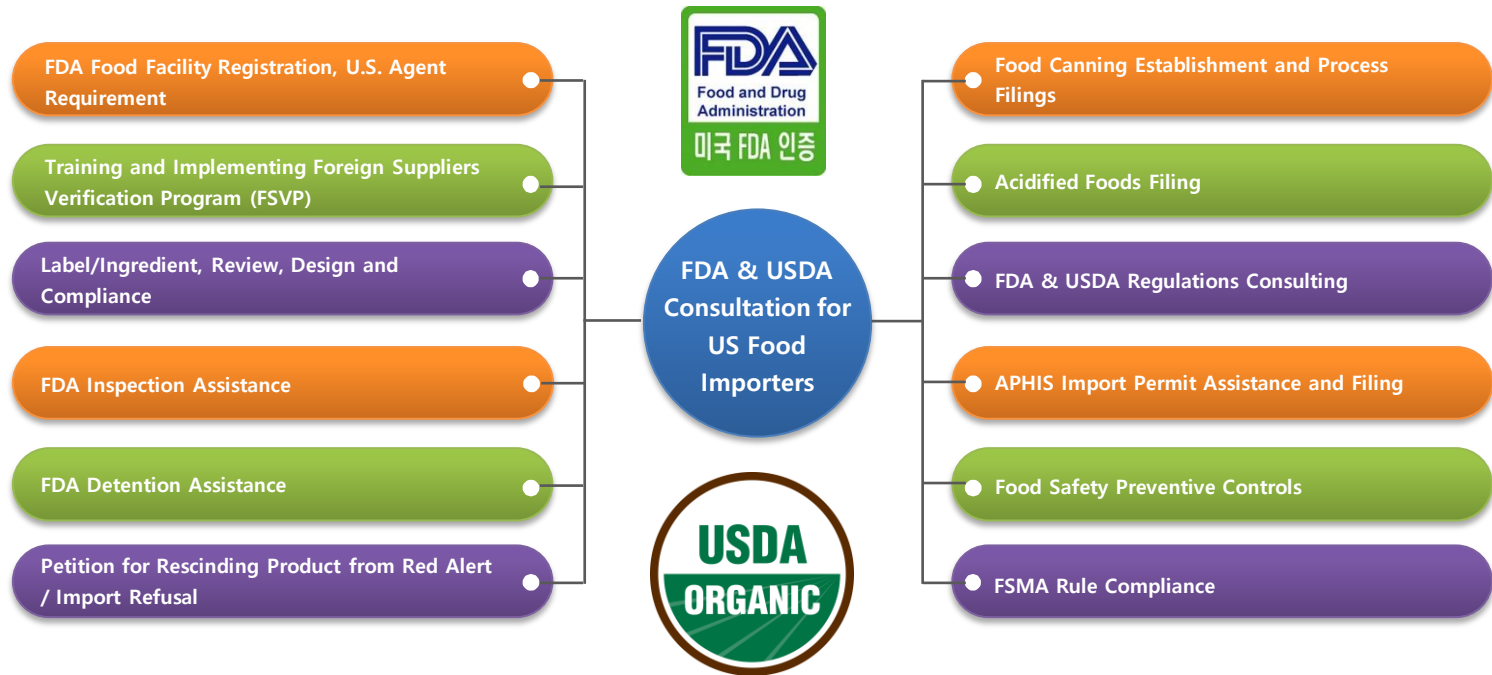
Silao Logistics Center



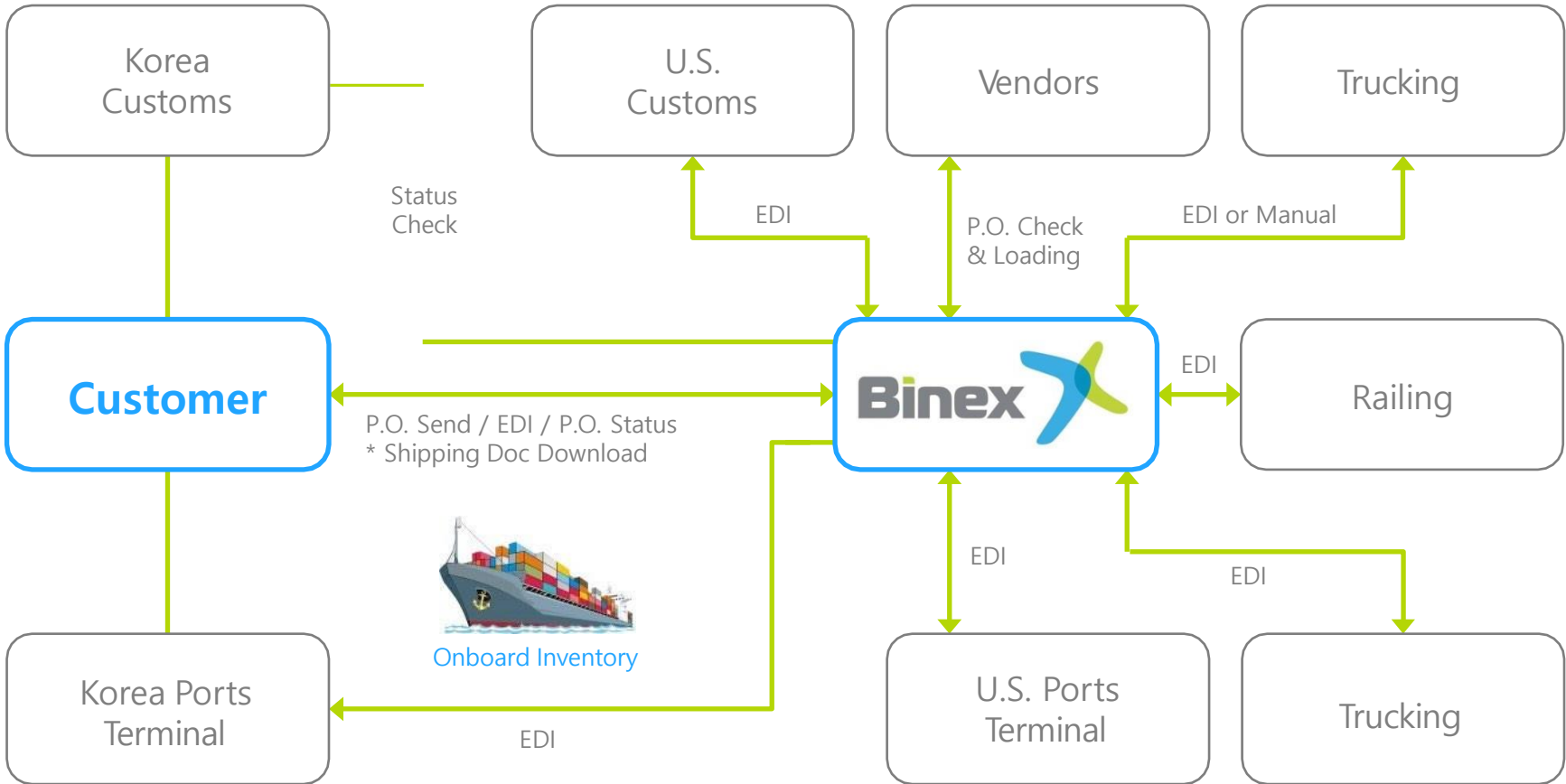
Puebla Logistics Center



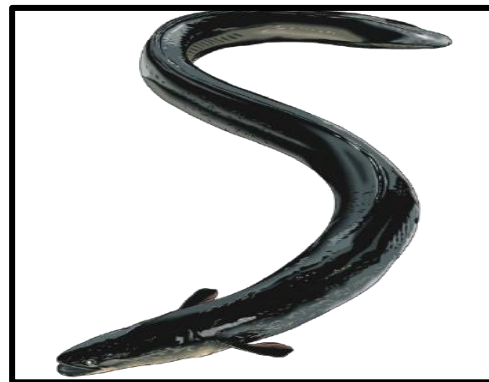
Special Project: FDA & USDA Consultation For US Food Importers



Informative P.O. Management: EDI System



Moving Live Sea Foods



Special Project: Military Cargo



Boeing

F-15K Appointed Forwarder



DAPA

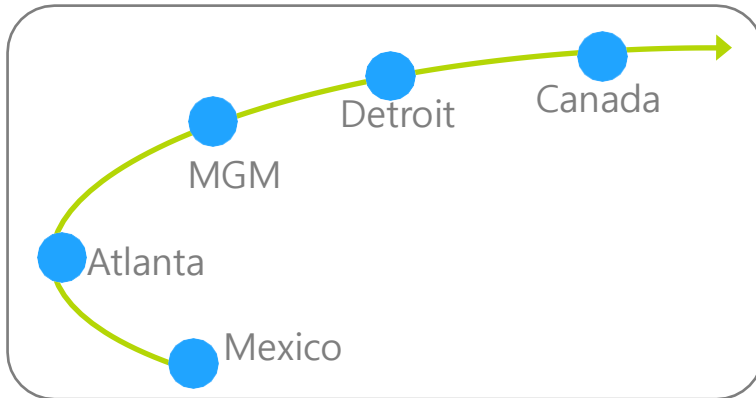
Korea Defense
Acquisition Program Ad
ministration



KAI

Korea Aerospace
Industries

Special Project: Auto Parts



HYUNDAI

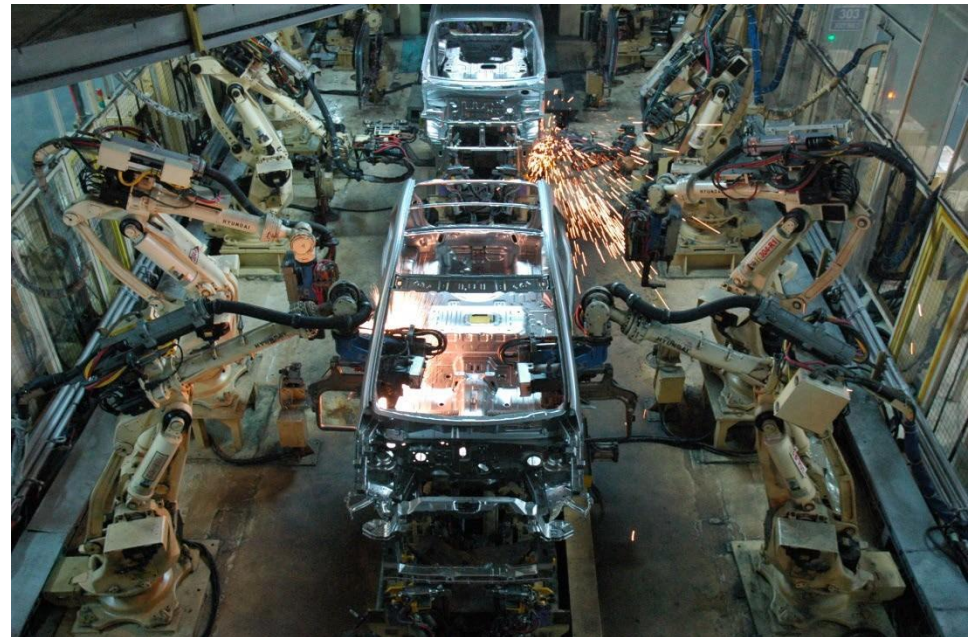
KIA

GM

Chrysler

- SeJong
- Mando
- Dea Heung
- Nifco

- Se Won
- Dae Dong
- HSS
- Magna



Corporate Milestones



Binex has been selected as Costco Wholesale (Korea)'s exclusive U.S. freight forwarder and P.O. Management Service Provider for 22 consecutive years since 2000.

Binex has been providing comprehensive logistics service for Boeing Aerospace to export military hardware to S. Korean Arm Services since 2005. Their shipments normally contain national defense cargoes that are highly sensitive and license required materials, extreme care, and special handling. Binex has gone through a series of interviews, inspections by Boeing, and we meet all their requirements between the U.S. and Korean governments.

Customer information systems such as Binex's Informative Software Systems (ISS), Transportation Management Systems (TMS), and Warehouse Management Systems (WMS) are vital in providing customers with on-time tracking information. In 2004 Binex launched its own state of the art information systems, which, not only provides software for all internal use, but provides real time online tracking to all our customers for all their import/export cargoes whether it's on ocean, in the air, or at rail. Our customers can access and print documents such as B/L, arrival notice, and an invoice from our system.

Binex started to focus on perishable export shipments from 2003, and today our company is known as one major perishable freight forwarder in the industry. We started with Cherry air shipments from Washington and California states, and now we handle more than 800 containers load per year on fresh fruits and produce such as Citrus, Pomegranates, Grapes, Broccolis, and etc. Today, approximately 40% of U.S.-grown Cherries, and 70% of U.S.-grown Pomegranates consumed in Korea are shipped by our company.

Major Global Logistics Partner



Major Customer



Foodstuff (Dry & Reefer) / Perishables / Military Cargo / Electronics / Consumer Products / Exempted Commodities

Our Contribution Back to the World

Binex proactively contributes to communities through corporate contributions, associate volunteerism, as well as various unique programs such as:

Children's Miracle Network Hospitals

Children's Miracle Network raises funds for North America's children's hospitals that are used to fund life saving care, education and research for our children.

Brittany's Hope Foundation

Brittany's Hope Foundation is a non-profit foundation dedicated to aiding and facilitating adoptions of special needs children from around the world. It raises funds and work with adoption agencies to lower the cost of adopting special needs children.

Han-Schneider International Children's Foundation

Through faith, love and compassion, the Han-Schneider International Children's Foundation is committed to breaking the cycle of poverty by creating a new cycle of prosperity. The mission of this Foundation is to provide life-saving essentials to the world's most destitute children.

Madison House Community, The Yakima Union Gospel Mission (YUGM)

The YUGM exists to provide Christ-centered rescue, recovery and restoration to men, women and children in need. Madison House is one of the programs offered by the Yakima UGM. It is available, at no cost, to all youth and adults who wish to participate in constructive activities; after-school and all day during the summer.

Hunter's Hope Foundation

Hunter's Hope Foundation is a non-profit organization committed to giving hope through education and awareness, research, and family care for Krabbe, Leukodystrophies, and Newborn Screening.

GCS(Grace Community Service)

The Foundation provides food and necessities everyday to people in need, and provides assistance and hope to people with cancer and disabilities.

MPAK(Mission to Promote Adoption of Kids)

MPAK is a non-profit organization that enables homeless children to grow up in loving homes through adoption.



HUMAN TOUCH | VALUE CREATING | e-LOGISTICS

*Thank
you*

